



ELECTRONIC COPY

LABORATORY GROWN DIAMOND REPORT

October 16, 2024	
IGI Report Number	LG659470605
Description	LABORATORY GROWN DIAMOND
Shape and Cutting Style	CUT CORNERED RECTANGULAR MODIFIED BRILLIANT
Measurements	9.10 X 6.31 X 4.15 MM

GRADING RESULTS

Carat Weight	2.07 CARATS
Color Grade	F
Clarity Grade	VS 2

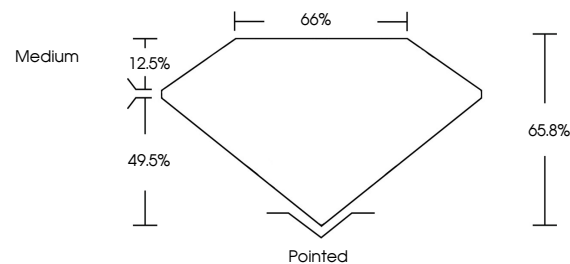
ADDITIONAL GRADING INFORMATION

Polish	EXCELLENT
Symmetry	EXCELLENT
Fluorescence	NONE
Inscription(s)	 LG659470605

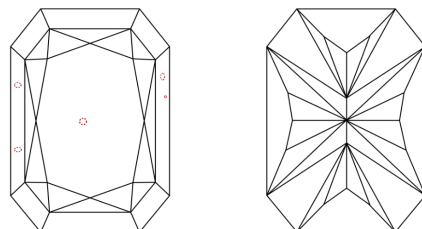
Comments: This Laboratory Grown Diamond was created by Chemical Vapor Deposition (CVD) growth process.
Type IIa

LG659470605
Report verification at igi.org

PROPORTIONS

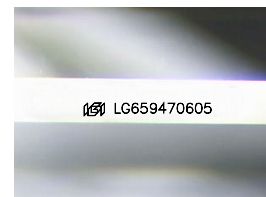


CLARITY CHARACTERISTICS



KEY TO SYMBOLS

Red symbols indicate internal characteristics.
Green symbols indicate external characteristics.



Sample Image Used

COLOR

D E F G H I J Faint Very Light Light

CLARITY

IF	VVS ¹⁻²	VS ¹⁻²	SI ¹⁻²	I ¹⁻³
Internally Flawless	Very Very Slightly Included	Very Slightly Included	Slightly Included	Included



© IGI 2020, International Gemological Institute

FD - 10 20

www.igi.org

LABORATORY GROWN DIAMOND REPORT

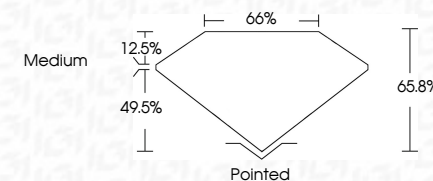


October 16, 2024	
IGI Report Number	LG659470605
Description	LABORATORY GROWN DIAMOND
Shape and Cutting Style	CUT CORNERED RECTANGULAR MODIFIED BRILLIANT

Measurements **9.10 X 6.31 X 4.15 MM**

GRADING RESULTS

Carat Weight	2.07 CARATS
Color Grade	F
Clarity Grade	VS 2



ADDITIONAL GRADING INFORMATION

Polish	EXCELLENT
Symmetry	EXCELLENT
Fluorescence	NONE
Inscription(s)	15 LG659470605

Comments: This Laboratory Grown Diamond was created by Chemical Vapor Deposition (CVD) growth process.
Type IIa



October 16, 2024	GI REPORT NO. LG55947005
CUT CORNERED RECT. MODIFIED BRILLIANT	
2.07 CARATS	
Color	F
Clarity	VS 2
Depth	65.6%
Table	65%
Girdle	Medium
Culet	Pointed
Polish	EXCELLENT
Symmetry	EXCELLENT
Fluorescence	NONE
Inscriptions(s)	lg01 LG55947005
Comments:	
This Laboratory Grown Diamond was grown using the Chemical Vapor Deposition (CVD) growth process.	
Type IIa	