



ELECTRONIC COPY

LG659441925
Report verification at igi.org



October 14, 2024

IGI Report Number **LG659441925**

Description **LABORATORY GROWN DIAMOND**

Shape and Cutting Style **PRINCESS CUT**

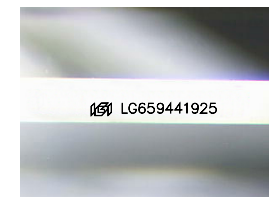
Measurements **9.49 X 9.33 X 6.42 MM**

GRADING RESULTS

Carat Weight **5.09 CARATS**

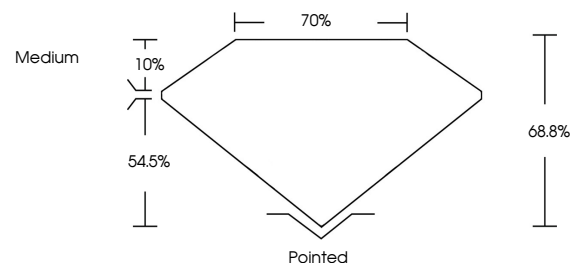
Color Grade **E**

Clarity Grade **VS 1**

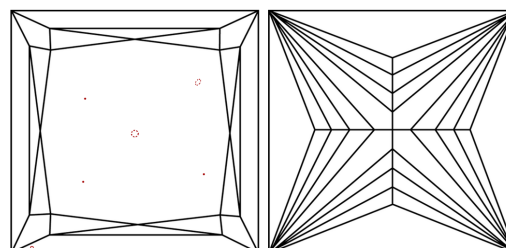


Sample Image Used

PROPORTIONS



CLARITY CHARACTERISTICS



KEY TO SYMBOLS

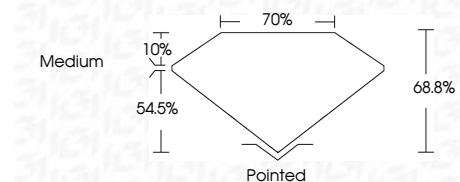
Red symbols indicate internal characteristics.
Green symbols indicate external characteristics.

COLOR

D E F G H I J Faint Very Light Light

CLARITY

IF	VS ¹⁻²	VS ¹⁻²	SI ¹⁻²	I ¹⁻³
Internally Flawless	Very Very Slightly Included	Very Slightly Included	Slightly Included	Included



ADDITIONAL GRADING INFORMATION

Polish **EXCELLENT**

Symmetry **EXCELLENT**

Fluorescence **NONE**

Inscription(s) **IGI LG659441925**

Comments: This Laboratory Grown Diamond was created by Chemical Vapor Deposition (CVD) growth process.
Type IIa



October 14, 2024
IGI Report No. LG659441925
PRINCESS CUT

5.09 CARATS
E

9.49 X 9.33 X 6.42 MM

Carat Weight
Color Grade
Clarity Grade
Depth
Table
Girdle
Medium

VS 1
68.8%
70%
Pointed
EXCELLENT
EXCELLENT
NONE
IGI LG659441925

Culet
Polish
Symmetry
Fluorescence
Inscription(s)

Comments: This Laboratory Grown Diamond was created by Chemical Vapor Deposition (CVD) growth process.
Type IIa