



ELECTRONIC COPY

LG659437530
Report verification at igi.org



October 14, 2024

IGI Report Number **LG659437530**

Description **LABORATORY GROWN DIAMOND**

Shape and Cutting Style **PRINCESS CUT**

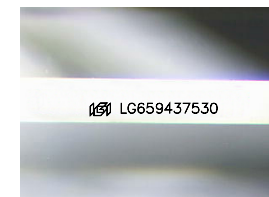
Measurements **9.66 X 9.56 X 6.48 MM**

GRADING RESULTS

Carat Weight **5.15 CARATS**

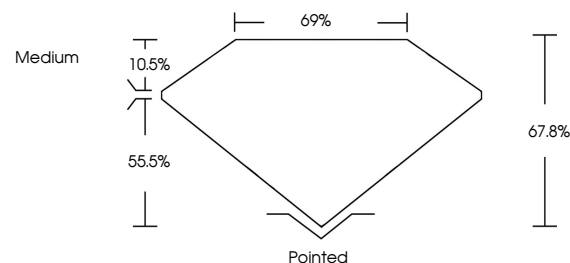
Color Grade **F**

Clarity Grade **VS 1**

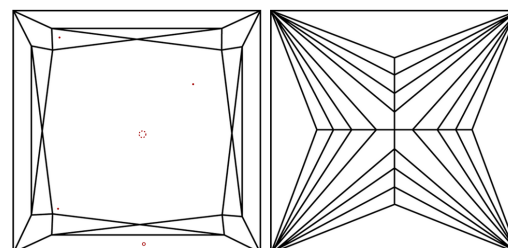


Sample Image Used

PROPORTIONS



CLARITY CHARACTERISTICS



KEY TO SYMBOLS

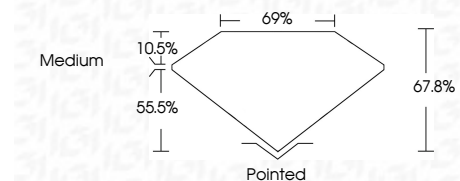
Red symbols indicate internal characteristics.
Green symbols indicate external characteristics.

COLOR

D E F G H I J Faint Very Light Light

CLARITY

IF	VS ¹⁻²	VS ¹⁻²	SI ¹⁻²	I ¹⁻³
Internally Flawless	Very Very Slightly Included	Very Slightly Included	Slightly Included	Included



ADDITIONAL GRADING INFORMATION

Polish **EXCELLENT**

Symmetry **EXCELLENT**

Fluorescence **NONE**

Inscription(s) **IGI LG659437530**

Comments: This Laboratory Grown Diamond was created by Chemical Vapor Deposition (CVD) growth process.
Type IIa



IGI



October 14, 2024
IGI Report No. LG659437530
PRINCESS CUT

5.15 CARATS
F

9.66 X 9.56 X 6.48 MM

Color Grade VS 1
Depth 67.8%
Table 10.5%
Girdle 69%
Medium

Pointed
EXCELLENT
EXCELLENT
NONE
IGI LG659437530

Comments: This Laboratory Grown Diamond was created by Chemical Vapor Deposition (CVD) growth process.
Type IIa