



**ELECTRONIC COPY**

## LABORATORY GROWN DIAMOND REPORT

October 11, 2024	
IGI Report Number	LG658490765
Description	LABORATORY GROWN DIAMOND
Shape and Cutting Style	CUT CORNERED RECTANGULAR MODIFIED BRILLIANT
Measurements	9.09 X 6.28 X 4.16 MM

## GRADING RESULTS

Carat Weight	2.04 CARATS
Color Grade	E
Clarity Grade	VS 2

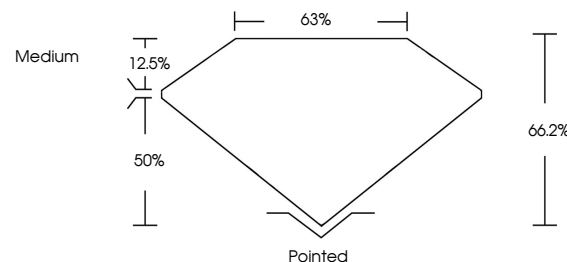
### ADDITIONAL GRADING INFORMATION

Polish	EXCELLENT
Symmetry	EXCELLENT
Fluorescence	NONE
Inscription(s)	 LG658490765

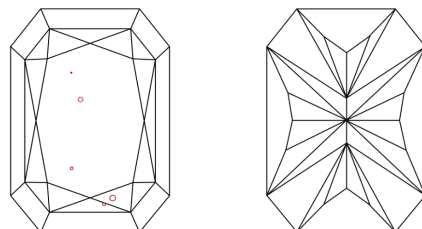
Comments: This Laboratory Grown Diamond was created by Chemical Vapor Deposition (CVD) growth process.  
Type IIa

LG658490765  
Report verification at [lgi.org](https://lgi.org)

## PROPORTIONS

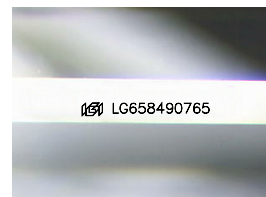


## CLARITY CHARACTERISTICS



### KEY TO SYMBOLS

Red symbols indicate internal characteristics.  
Green symbols indicate external characteristics.



Sample Image Used

## COLOR

D E F G H I J Faint Very Light Light

## CLARITY

IF	VVS <sup>1-2</sup>	VS <sup>1-2</sup>	SI <sup>1-2</sup>	I <sup>1-3</sup>
Internally Flawless	Very Very Slightly Included	Very Slightly Included	Slightly Included	Included



© IGI 2020, International Gemological Institute

FD - 10 20

**www.igi.org**

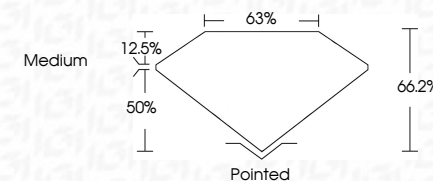
## LABORATORY GROWN DIAMOND REPORT



October 11, 2024	
IGI Report Number	LG658490765
Description	LABORATORY GROWN DIAMOND
Shape and Cutting Style	CUT CORNERED RECTANGULAR MODIFIED BRILLIANT
Measurements	9.09 X 6.28 X 4.16 MM

## GRADING RESULTS

Carat Weight	2.04 CARATS
Color Grade	E
Clarity Grade	VS 2



### ADDITIONAL GRADING INFORMATION

Polish	EXCELLENT
Symmetry	EXCELLENT
Fluorescence	NONE
Inscription(s)	 LG658490765
<p>Comments: This Laboratory Grown Diamond was created by Chemical Vapor Deposition (CVD) growth process.</p> <p>Type IIa</p>	



October 11, 2024	GI Report No LG56940705
CUT CORNERED RECT. MODIFIED BRILLIANT	
0.09 X 0.28 X 4.16 MM	2.04 CARATS
Color Grade	E
Clarity Grade	VS2
Depth	64.2%
Table	65%
Girdle	Medium
Culet	Pointed
Polish	EXCELLENT
Symmetry	EXCELLENT
Fluorescence	NONE
Inscriptions(s)	1881 LG56940705

Comments: Laboratory Grown Diamond was created by Chemical Vapor Deposition (CVD) growth process.

Type IIG