



**ELECTRONIC COPY**

LG657419419  
Report verification at igi.org



October 7, 2024

IGI Report Number **LG657419419**

Description **LABORATORY GROWN DIAMOND**

Shape and Cutting Style **CUSHION BRILLIANT**

Measurements **12.20 X 8.81 X 5.88 MM**

**GRADING RESULTS**

Carat Weight **5.14 CARATS**

Color Grade **E**

Clarity Grade **VS 1**

**LABORATORY GROWN DIAMOND REPORT**

October 7, 2024

IGI Report Number **LG657419419**

Description **LABORATORY GROWN DIAMOND**

Shape and Cutting Style **CUSHION BRILLIANT**

Measurements **12.20 X 8.81 X 5.88 MM**

**GRADING RESULTS**

Carat Weight **5.14 CARATS**

Color Grade **E**

Clarity Grade **VS 1**

**ADDITIONAL GRADING INFORMATION**

Polish **EXCELLENT**

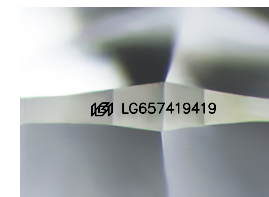
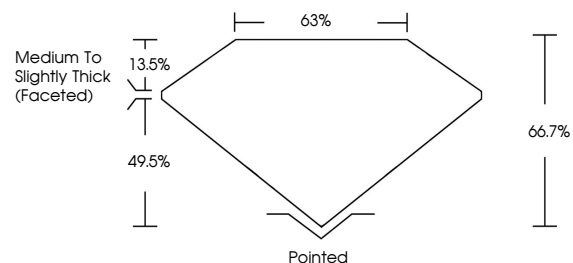
Symmetry **EXCELLENT**

Fluorescence **NONE**

Inscription(s) **LG657419419**

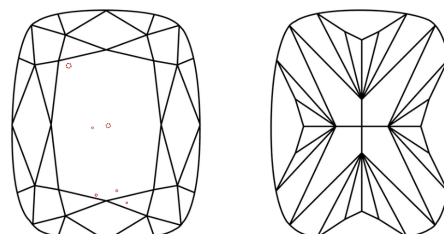
Comments: This Laboratory Grown Diamond was created by Chemical Vapor Deposition (CVD) growth process. Type IIa

**PROPORTIONS**



Sample Image Used

**CLARITY CHARACTERISTICS**



**KEY TO SYMBOLS**

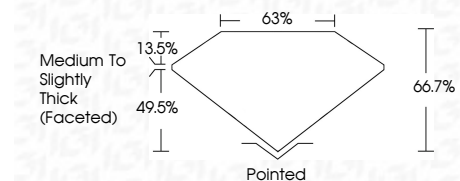
Red symbols indicate internal characteristics.  
Green symbols indicate external characteristics.

**COLOR**

D E F G H I J Faint Very Light Light

**CLARITY**

IF	VS <sup>1-2</sup>	VS <sup>1-2</sup>	SI <sup>1-2</sup>	I <sup>1-3</sup>
Internally Flawless	Very Very Slightly Included	Very Slightly Included	Slightly Included	Included



**ADDITIONAL GRADING INFORMATION**

Polish **EXCELLENT**

Symmetry **EXCELLENT**

Fluorescence **NONE**

Inscription(s) **LG657419419**

Comments: This Laboratory Grown Diamond was created by Chemical Vapor Deposition (CVD) growth process. Type IIa



**IGI**



October 7, 2024  
IGI Report No LG657419419  
CUSHION BRILLIANT

12.20 X 8.81 X 5.88 MM

5.14 CARATS  
E

Carat Weight  
Color Grade  
Clarity Grade  
Table  
Depth  
Girdle

66.7%  
63%

Medium to Slightly Thick (Faceted)

Pointed  
EXCELLENT  
EXCELLENT  
NONE  
None

IGI LG657419419

Comments: This Laboratory Grown Diamond was created by Chemical Vapor Deposition (CVD) growth process. Type IIa