



ELECTRONIC COPY

LG656484122
Report verification at igi.org



October 5, 2024

IGI Report Number **LG656484122**

Description **LABORATORY GROWN DIAMOND**

Shape and Cutting Style **CUSHION BRILLIANT**

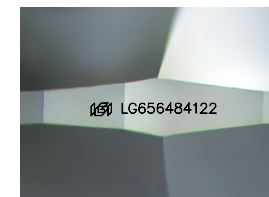
Measurements **11.14 X 8.52 X 5.75 MM**

GRADING RESULTS

Carat Weight **4.43 CARATS**

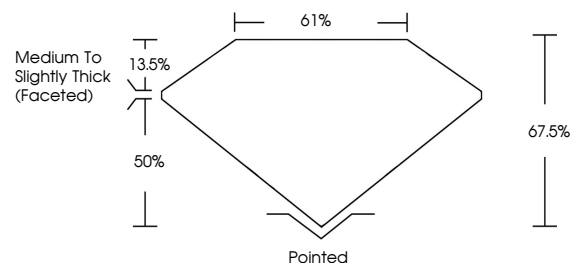
Color Grade **E**

Clarity Grade **VS 1**

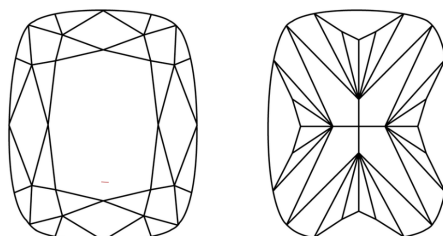


Sample Image Used

PROPORTIONS



CLARITY CHARACTERISTICS



KEY TO SYMBOLS

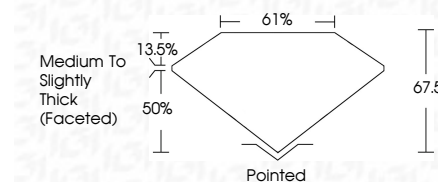
Red symbols indicate internal characteristics.
Green symbols indicate external characteristics.

COLOR

D E F G H I J Faint Very Light Light

CLARITY

IF	VS ¹⁻²	VS ¹⁻²	SI ¹⁻²	I ¹⁻³
Internally Flawless	Very Very Slightly Included	Very Slightly Included	Slightly Included	Included



ADDITIONAL GRADING INFORMATION

Polish **EXCELLENT**

Symmetry **EXCELLENT**

Fluorescence **NONE**

Inscription(s) **IGI LG656484122**

Comments: This Laboratory Grown Diamond was created by Chemical Vapor Deposition (CVD) growth process. Type IIa



IGI



October 5, 2024
IGI Report No LG656484122
CUSHION BRILLIANT

11.14 X 8.52 X 5.75 MM

4.43 CARATS
E

Carat Weight
Color Grade
Clarity Grade
Table
Girdle
Medium to Slightly Thick (Faceted)

VS 1
67.5%
61%

Pointed
EXCELLENT
EXCELLENT
NONE
IGI LG656484122

Culet
Polish
Symmetry
Fluorescence
Inscription(s)

Comments: This Laboratory Grown Diamond was created by Chemical Vapor Deposition (CVD) growth process. Type IIa