



ELECTRONIC COPY

LABORATORY GROWN DIAMOND REPORT

October 4, 2024	
IGI Report Number	LG656477609
Description	LABORATORY GROWN DIAMOND
Shape and Cutting Style	CUT CORNERED RECTANGULAR MODIFIED BRILLIANT
Measurements	8.94 X 6.31 X 4.20 MM

GRADING RESULTS

Carat Weight	2.10 CARATS
Color Grade	E
Clarity Grade	VS 2

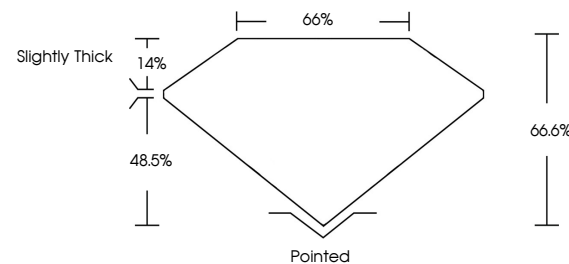
ADDITIONAL GRADING INFORMATION

Polish	EXCELLENT
Symmetry	EXCELLENT
Fluorescence	NONE
Inscription(s)	15 LG656477609

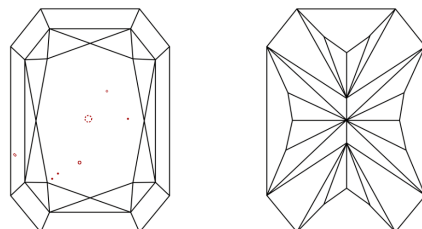
Comments: This Laboratory Grown Diamond was created by Chemical Vapor Deposition (CVD) growth process.
Type IIa

LG656477609
Report verification at lgi.org

PROPORTIONS

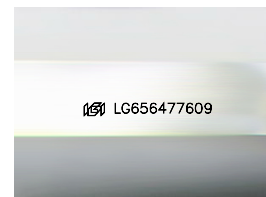


CLARITY CHARACTERISTICS



KEY TO SYMBOLS

Red symbols indicate internal characteristics.
Green symbols indicate external characteristics.



Sample Image Used

COLOR

D E F G H I J Faint Very Light Light

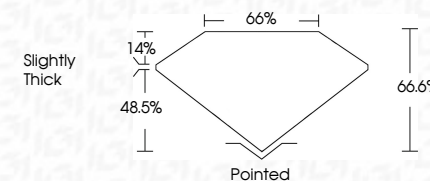
CLARITY

IF	VVS ¹⁻²	VS ¹⁻²	SI ¹⁻²	I ¹⁻³
Internally Flawless	Very Very Slightly Included	Very Slightly Included	Slightly Included	Included

LABORATORY GROWN DIAMOND REPORT



October 4, 2024	
IGI Report Number	LG656477609
Description	LABORATORY GROWN DIAMOND
Shape and Cutting Style	CUT CORNERED RECTANGULAR MODIFIED BRILLIANT
Measurements	8.94 X 6.31 X 4.20 MM
GRADING RESULTS	
Carat Weight	2.10 CARATS
Color Grade	E
Clarity Grade	VS 2



ADDITIONAL GRADING INFORMATION

Polish	EXCELLENT
Symmetry	EXCELLENT
Fluorescence	NONE
Inscription(s)	 LG666477609
<p>Comments: This Laboratory Grown Diamond was created by Chemical Vapor Deposition (CVD) growth process.</p> <p>Type IIa</p>	



© IGI 2020, International Gemological Institute

FD - 10 20



October 4, 2024	GI Report No LG65477609	2.10 CARATS	E
Color	GI Report No LG65477609		
Shape	CT CORNERED RECT, MODIFIED BRILLIANT		
Weight	3.94 X 6.31 X 4.20 MM		
Color	Cart Weight		
Grade	Color Grade		
Clarity	Clarity Grade	VS 2	
Depth	Depth	66.6%	
Table	Table	65%	
Girdle	Girdle	Slightly Thick	
Culet	Culet	Polished	
Polish	Polish	EXCELLENT	
Symmetry	Symmetry	EXCELLENT	
Fluorescence	Fluorescence	NONE	
Comments	Comments		

Comments:
This Laboratory Grown Diamond was
created by Chemical Vapor Deposition
(CVD) growth process.