



ELECTRONIC COPY

LABORATORY GROWN DIAMOND REPORT

October 5, 2024	
IGI Report Number	LG656414697
Description	LABORATORY GROWN DIAMOND
Shape and Cutting Style	CUT CORNERED RECTANGULAR MODIFIED BRILLIANT
Measurements	8.67 X 6.14 X 4.00 MM

GRADING RESULTS

Carat Weight	1.89 CARAT
Color Grade	D
Clarity Grade	VS 1

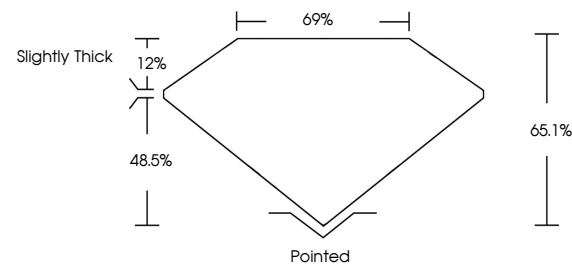
ADDITIONAL GRADING INFORMATION

Polish	EXCELLENT
Symmetry	EXCELLENT
Fluorescence	NONE
Inscription(s)	15 LG656414697

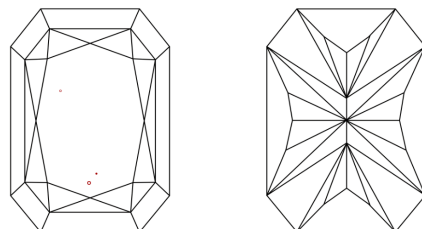
Comments: This Laboratory Grown Diamond was created by Chemical Vapor Deposition (CVD) growth process.
Type IIa

LG656414697
Report verification at lgi.org

PROPORTIONS

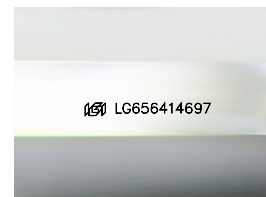


CLARITY CHARACTERISTICS



KEY TO SYMBOLS

Red symbols indicate internal characteristics.
Green symbols indicate external characteristics.



Sample Image Used

COLOR

D E F G H I J Faint Very Light Light

CLARITY

IF	VVS ¹⁻²	VS ¹⁻²	SI ¹⁻²	I ¹⁻³
Internally Flawless	Very Very Slightly Included	Very Slightly Included	Slightly Included	Included



© IGI 2020, International Gemological Institute

FD - 10 20

www.igi.org

LABORATORY GROWN DIAMOND REPORT

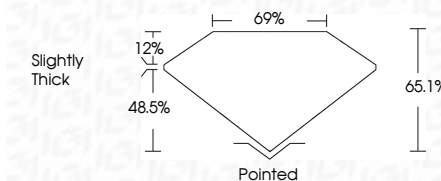


October 5, 2024	
IGI Report Number	LG656414697
Description	LABORATORY GROWN DIAMOND
Shape and Cutting Style	CUT CORNERED RECTANGULAR MODIFIED BRILLIANT

Measurements **8.67 X 6.14 X 4.00 MM**

GRADING RESULTS

Carat Weight	1.89 CARAT
Color Grade	D
Clarity Grade	VS 1



ADDITIONAL GRADING INFORMATION

Polish	EXCELLENT
Symmetry	EXCELLENT
Fluorescence	NONE
Inscription(s)	15 LG 6564 14697

Comments: This Laboratory Grown Diamond was created by Chemical Vapor Deposition (CVD) growth process.
Type IIa



October 5, 2024	GI Report No LG56541.14697
CUT CORNERED RECT. MODIFIED BRILLIANT	
1.67 X 6.14 X 4.00 MM	1.89 CARAT
Color Weight	D
Color Grade	VS 1
Depth	65.1%
Table	67%
Grade	Slightly Thick
Polish	Polished
Symmetry	EXCELLENT
Fluorescence	EXCELLENT
Inscriptions(s)	NONE
	1691 LG56541.14697
<p>Comments:</p> <p>This Laboratory Grown Diamond was created by Chemical Vapor Deposition (CVD) growth process.</p> <p>Type IIA</p>	