



**ELECTRONIC COPY**

LG656414666  
Report verification at igi.org



October 5, 2024

IGI Report Number **LG656414666**

Description **LABORATORY GROWN DIAMOND**

Shape and Cutting Style **CUSHION BRILLIANT**

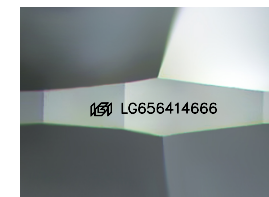
Measurements **9.04 X 6.53 X 4.33 MM**

**GRADING RESULTS**

Carat Weight **2.04 CARATS**

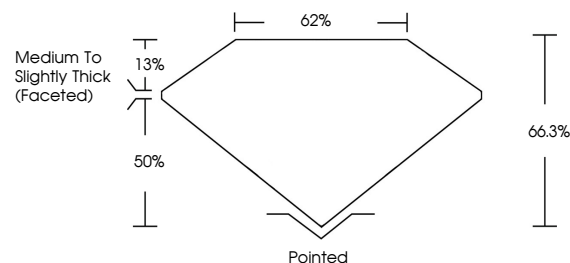
Color Grade **F**

Clarity Grade **VS 1**

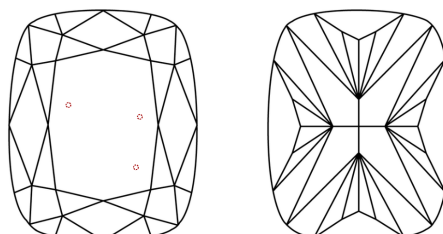


Sample Image Used

**PROPORTIONS**



**CLARITY CHARACTERISTICS**



**KEY TO SYMBOLS**

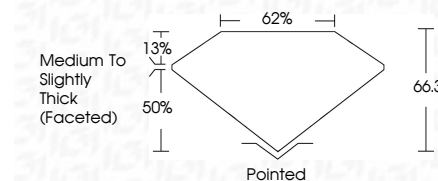
Red symbols indicate internal characteristics.  
Green symbols indicate external characteristics.

**COLOR**

D E F G H I J Faint Very Light Light

**CLARITY**

IF	VS <sup>1-2</sup>	VS <sup>1-2</sup>	SI <sup>1-2</sup>	I <sup>1-3</sup>
Internally Flawless	Very Very Slightly Included	Very Slightly Included	Slightly Included	Included



**ADDITIONAL GRADING INFORMATION**

Polish **EXCELLENT**

Symmetry **EXCELLENT**

Fluorescence **NONE**

Inscription(s) **IGI LG656414666**

Comments: This Laboratory Grown Diamond was created by Chemical Vapor Deposition (CVD) growth process.  
Type IIa



**IGI**



October 5, 2024  
IGI Report No LG656414666  
CUSHION BRILLIANT

9.04 X 6.53 X 4.33 MM

2.04 CARATS  
F

Color Grade  
Depth 66.3%  
Table 62%

Medium to Slightly Thick (Faceted)

Clarity Grade VS 1  
Pointed  
EXCELLENT

Polish EXCELLENT  
Symmetry EXCELLENT  
Fluorescence NONE

Inscription(s) IGI LG656414666

Comments: This Laboratory Grown Diamond was created by Chemical Vapor Deposition (CVD) growth process.  
Type IIa