



ELECTRONIC COPY

LG656400220
Report verification at igi.org



October 3, 2024

IGI Report Number **LG656400220**

Description **LABORATORY GROWN DIAMOND**

Shape and Cutting Style **EMERALD CUT**

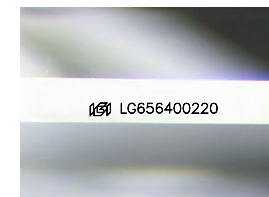
Measurements **10.84 X 7.47 X 5.09 MM**

GRADING RESULTS

Carat Weight **4.10 CARATS**

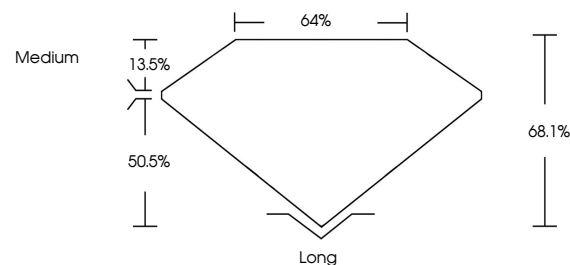
Color Grade **E**

Clarity Grade **VVS 2**

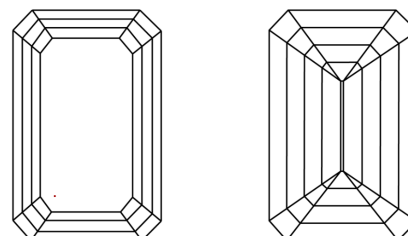


Sample Image Used

PROPORTIONS



CLARITY CHARACTERISTICS



KEY TO SYMBOLS

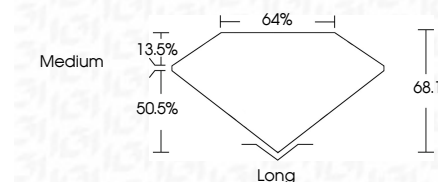
Red symbols indicate internal characteristics.
Green symbols indicate external characteristics.

COLOR

D E F G H I J Faint Very Light Light

CLARITY

IF	VS ¹⁻²	VS ¹⁻²	SI ¹⁻²	I ¹⁻³
Internally Flawless	Very Very Slightly Included	Very Slightly Included	Slightly Included	Included



ADDITIONAL GRADING INFORMATION

Polish **EXCELLENT**

Symmetry **EXCELLENT**

Fluorescence **NONE**

Inscription(s) **IGI LG656400220**

Comments: This Laboratory Grown Diamond was created by Chemical Vapor Deposition (CVD) growth process. Type IIa



IGI



October 3, 2024
IGI Report No. LG656400220
EMERALD CUT
10.84 X 7.47 X 5.09 MM
4.10 CARATS
E
VVS 2
68.1%
44%
Medium
Long
EXCELLENT
EXCELLENT
NONE
IGI LG656400220
Comments: This Laboratory Grown Diamond was created by Chemical Vapor Deposition (CVD) growth process. Type IIa