



ELECTRONIC COPY

LABORATORY GROWN DIAMOND REPORT

October 2, 2024
IGI Report Number LG655443953
Description LABORATORY GROWN DIAMOND
Shape and Cutting Style CUT CORNERED RECTANGULAR MODIFIED BRILLIANT
Measurements 8.11 X 5.69 X 3.80 MM

GRADING RESULTS

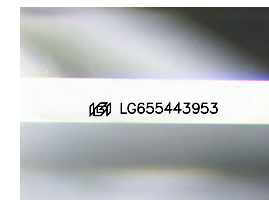
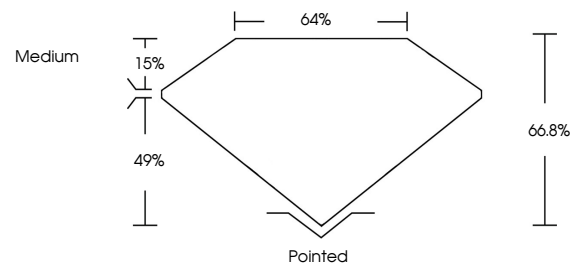
Carat Weight 1.54 CARAT
Color Grade E
Clarity Grade VS 1

ADDITIONAL GRADING INFORMATION

Polish EXCELLENT
Symmetry EXCELLENT
Fluorescence NONE
Inscription(s) LG655443953

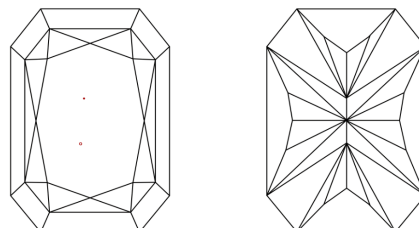
Comments: This Laboratory Grown Diamond was created by Chemical Vapor Deposition (CVD) growth process. Type IIa

PROPORTIONS



Sample Image Used

CLARITY CHARACTERISTICS



KEY TO SYMBOLS

Red symbols indicate internal characteristics. Green symbols indicate external characteristics.

COLOR

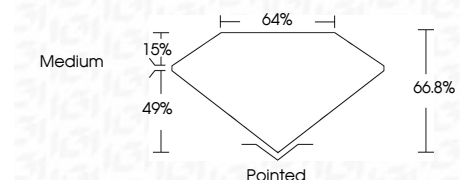
D E F G H I J Faint Very Light Light

CLARITY

Table mapping clarity grades (IF, VVS, VS, SI, I) to their descriptions (Internally Flawless, Very Very Slightly Included, etc.)



October 2, 2024
IGI Report Number LG655443953
Description LABORATORY GROWN DIAMOND
Shape and Cutting Style CUT CORNERED RECTANGULAR MODIFIED BRILLIANT
Measurements 8.11 X 5.69 X 3.80 MM
GRADING RESULTS
Carat Weight 1.54 CARAT
Color Grade E
Clarity Grade VS 1



ADDITIONAL GRADING INFORMATION

Polish EXCELLENT
Symmetry EXCELLENT
Fluorescence NONE
Inscription(s) LG655443953
Comments: This Laboratory Grown Diamond was created by Chemical Vapor Deposition (CVD) growth process. Type IIa



October 2, 2024
IGI Report No LG655443953
CUT CORNERED RECT. MODIFIED BRILLIANT
8.11 X 5.69 X 3.80 MM
1.54 CARAT E
VS 1
66.8% 49%
Medium
Pointed
EXCELLENT
EXCELLENT
NONE
Inscription(s) LG655443953
Comments: This Laboratory Grown Diamond was created by Chemical Vapor Deposition (CVD) growth process. Type IIa