



ELECTRONIC COPY

LG655443757
Report verification at igi.org



October 1, 2024

IGI Report Number LG655443757

Description LABORATORY GROWN DIAMOND

Shape and Cutting Style CUT CORNERED RECTANGULAR MODIFIED BRILLIANT

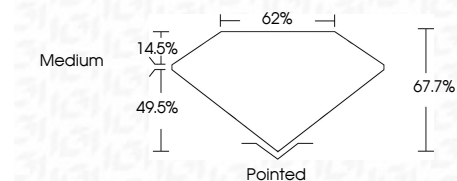
Measurements 7.32 X 5.05 X 3.42 MM

GRADING RESULTS

Carat Weight 1.09 CARAT

Color Grade G

Clarity Grade VVS 1



ADDITIONAL GRADING INFORMATION

Polish EXCELLENT

Symmetry EXCELLENT

Fluorescence NONE

Inscription(s) LG655443757

Comments: This Laboratory Grown Diamond was created by Chemical Vapor Deposition (CVD) growth process. Type IIa



IGI

October 1, 2024
IGI Report No LG655443757
CUT CORNERED RECT. MODIFIED BRILLIANT
7.32 X 5.05 X 3.42 MM
1.09 CARAT
G
VVS 1
67.7%
62%
Medium
Pointed
EXCELLENT
EXCELLENT
NONE
LG655443757
Comments: This Laboratory Grown Diamond was created by Chemical Vapor Deposition (CVD) growth process. Type IIa

LABORATORY GROWN DIAMOND REPORT

October 1, 2024

IGI Report Number LG655443757

Description LABORATORY GROWN DIAMOND

Shape and Cutting Style CUT CORNERED RECTANGULAR MODIFIED BRILLIANT

Measurements 7.32 X 5.05 X 3.42 MM

GRADING RESULTS

Carat Weight 1.09 CARAT

Color Grade G

Clarity Grade VVS 1

ADDITIONAL GRADING INFORMATION

Polish EXCELLENT

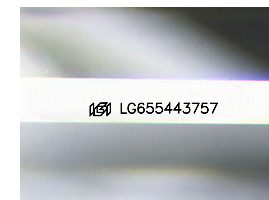
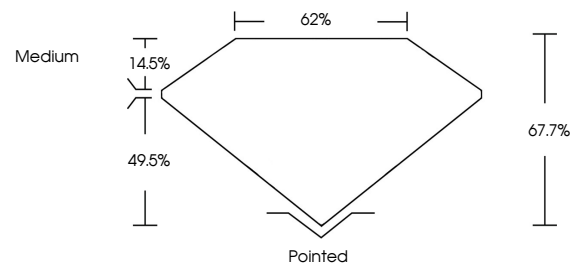
Symmetry EXCELLENT

Fluorescence NONE

Inscription(s) LG655443757

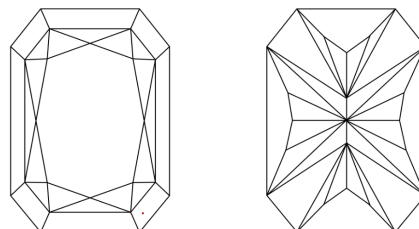
Comments: This Laboratory Grown Diamond was created by Chemical Vapor Deposition (CVD) growth process. Type IIa

PROPORTIONS



Sample Image Used

CLARITY CHARACTERISTICS



KEY TO SYMBOLS

Red symbols indicate internal characteristics. Green symbols indicate external characteristics.

COLOR

D E F G H I J Faint Very Light Light

CLARITY

IF VVS 1-2 VS 1-2 SI 1-2 I 1-3
Internally Flawless Very Very Slightly Included Very Slightly Included Slightly Included Included