



ELECTRONIC COPY

LABORATORY GROWN DIAMOND REPORT

October 4, 2024	
IGI Report Number	LG655442915
Description	LABORATORY GROWN DIAMOND
Shape and Cutting Style	CUT CORNERED RECTANGULAR MODIFIED BRILLIANT
Measurements	9.08 X 6.24 X 4.23 MM

GRADING RESULTS

Carat Weight	2.08 CARATS
Color Grade	E
Clarity Grade	VS 2

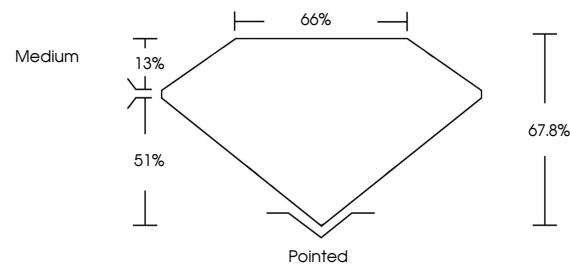
ADDITIONAL GRADING INFORMATION

Polish	EXCELLENT
Symmetry	EXCELLENT
Fluorescence	NONE
Inscription(s)	15 LG655442915

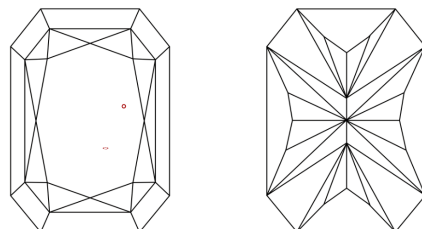
Comments: This Laboratory Grown Diamond was created by Chemical Vapor Deposition (CVD) growth process.
Type IIa

LG655442915
Report verification at lgi.org

PROPORTIONS

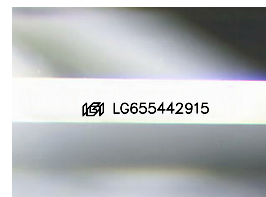


CLARITY CHARACTERISTICS



KEY TO SYMBOLS

Red symbols indicate internal characteristics.
Green symbols indicate external characteristics.



Sample Image Used

COLOR

D E F G H I J Faint Very Light Light

CLARITY

IF	VVS ¹⁻²	VS ¹⁻²	SI ¹⁻²	I ¹⁻³
Internally Flawless	Very Very Slightly Included	Very Slightly Included	Slightly Included	Included



© IGI 2020, International Gemological Institute

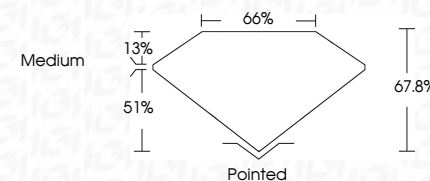
FD - 10 20

www.igi.org

LABORATORY GROWN DIAMOND REPORT



October 4, 2024	
IGI Report Number	LG655442915
Description	LABORATORY GROWN DIAMOND
Shape and Cutting Style	CUT CORNERED RECTANGULAR MODIFIED BRILLIANT
Measurements	9.08 X 6.24 X 4.23 MM
GRADING RESULTS	
Carat Weight	2.08 CARATS
Color Grade	E
Clarity Grade	VS 2



ADDITIONAL GRADING INFORMATION

Polish	EXCELLENT
Symmetry	EXCELLENT
Fluorescence	NONE
Inscription(s)	 LG655442915
<p>Comments: This Laboratory Grown Diamond was created by Chemical Vapor Deposition (CVD) growth process.</p> <p>Type IIa</p>	



IG

October 4, 2024	Report No LG45542915	2.08 CARATS
GI CORNERED RECT, MODIFIED BRILLIANT		
0.08 X 0.08 X 0.24 X 4.23 MM		
Carat Weight		
Color Grade		
Clarity Grade	VS 2	
Depth	67.8%	
Table	65%	
Grade	Medium	
Culet	Pointed	
Polish	EXCELLENT	
Symmetry	EXCELLENT	
Fluorescence	NONE	
Annotations	see LG45542915	

Comments:
This Laboratory Grown Diamond was created by Chemical Vapor Deposition (CVD) growth process.