



ELECTRONIC COPY

LABORATORY GROWN DIAMOND REPORT

October 1, 2024	
IGI Report Number	LG655441924
Description	LABORATORY GROWN DIAMOND
Shape and Cutting Style	CUSHION BRILLIANT
Measurements	11.51 X 9.03 X 6.08 MM

GRADING RESULTS

Carat Weight	5.10 CARATS
Color Grade	E
Clarity Grade	VS 1

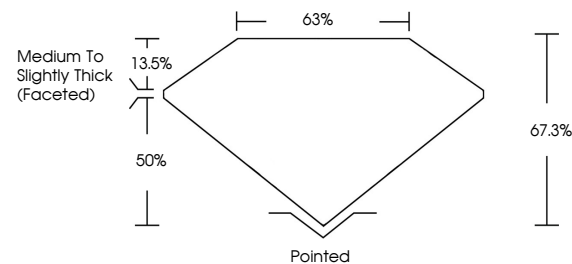
ADDITIONAL GRADING INFORMATION

Polish	EXCELLENT
Symmetry	EXCELLENT
Fluorescence	NONE
Inscription(s)	 LG655441924

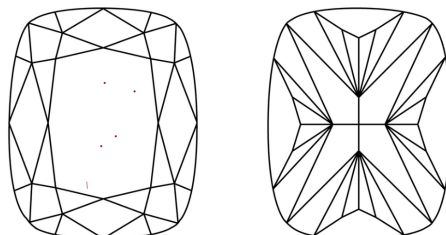
Comments: This Laboratory Grown Diamond was created by Chemical Vapor Deposition (CVD) growth process.
Type IIa

LG655441924
Report verification at lgi.org

PROPORTIONS

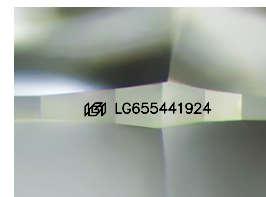


CLARITY CHARACTERISTICS



KEY TO SYMBOLS

Red symbols indicate internal characteristics.
Green symbols indicate external characteristics.



Sample Image Used

COLOR

D E F G H I J Faint Very Light Light

CLARITY

IF	VVS ¹⁻²	VS ¹⁻²	SI ¹⁻²	I ¹⁻³
Internally Flawless	Very Very Slightly Included	Very Slightly Included	Slightly Included	Included



© IGI 2020, International Gemological Institute

FD - 10 20

www.igi.org

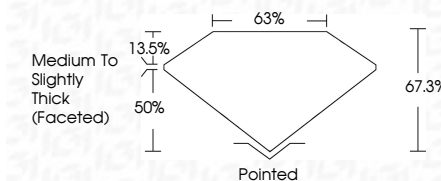
LABORATORY GROWN DIAMOND REPORT



October 1, 2024	
IGI Report Number	LG655441924
Description	LABORATORY GROWN DIAMOND
Shape and Cutting Style	CUSHION BRILLIANT
Measurements	11.51 X 9.03 X 6.08 MM

GRADING RESULTS

Carat Weight	5.10 CARATS
Color Grade	E
Clarity Grade	VS 1



ADDITIONAL GRADING INFORMATION

Polish	EXCELLENT
Symmetry	EXCELLENT
Fluorescence	NONE
Inscription(s)	 LG655441924
<p>Comments: This Laboratory Grown Diamond was created by Chemical Vapor Deposition (CVD) growth process.</p> <p>Type IIa</p>	



October 1, 2024	CSH Report No. LG555441924	5.10 CARATS	E	VS 1	67.3%	63%	Medium to slightly Thick Faceted	Pointed	EXCELLENT	EXCELLENT	NONE	6891 LG555441924
GI SHILLING BRIGHT		11.51 X 9.03 X 6.08 MM										
		Color Weight	Color Grade	Clarity Grade	Depth	Table	Girdle	Culet	Polish	Symmetry	Fluorescence	Inscriptions(s)

Comments: This is a Natural, Colorless, Crown Diamond was created by Chemical Vapor Deposition (CVD) growth process.

Type IIA