



**ELECTRONIC COPY**

## LABORATORY GROWN DIAMOND REPORT

October 1, 2024	
IGI Report Number	LG655428615
Description	LABORATORY GROWN DIAMOND
Shape and Cutting Style	CUT CORNERED RECTANGULAR MODIFIED BRILLIANT
Measurements	9.06 X 6.25 X 4.12 MM

## GRADING RESULTS

Carat Weight	2.02 CARATS
Color Grade	D
Clarity Grade	VS 2

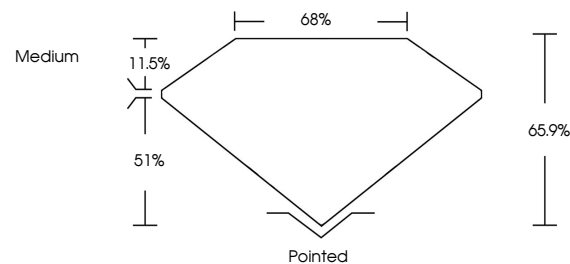
### ADDITIONAL GRADING INFORMATION

Polish	EXCELLENT
Symmetry	EXCELLENT
Fluorescence	NONE
Inscription(s)	 LG655428615

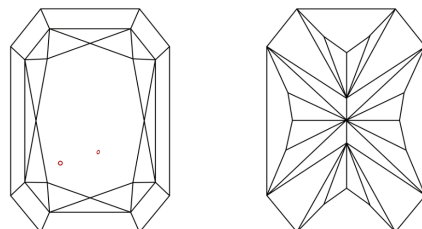
Comments: This Laboratory Grown Diamond was created by Chemical Vapor Deposition (CVD) growth process.  
Type IIa

LG655428615  
Report verification at [lgi.org](https://lgi.org)

## PROPORTIONS

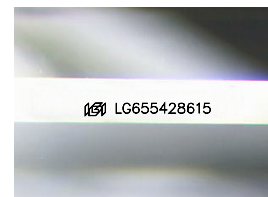


## CLARITY CHARACTERISTICS



## KEY TO SYMBOLS

Red symbols indicate internal characteristics.  
Green symbols indicate external characteristics.



Sample Image Used

## COLOR

D E F G H I J Faint Very Light Light

## CLARITY

IF	VVS <sup>1-2</sup>	VS <sup>1-2</sup>	SI <sup>1-2</sup>	I <sup>1-3</sup>
Internally Flawless	Very Very Slightly Included	Very Slightly Included	Slightly Included	Included



© IGI 2020, International Gemological Institute

FD - 10 20

**www.igi.org**

## LABORATORY GROWN DIAMOND REPORT

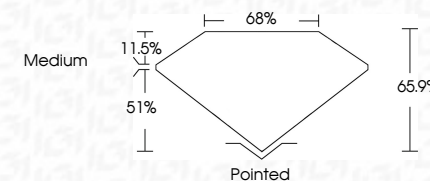


October 1, 2024	
IGI Report Number	LG655428615
Description	LABORATORY GROWN DIAMOND
Shape and Cutting Style	CUT CORNERED RECTANGULAR MODIFIED BRILLIANT

Measurements **9.06 X 6.25 X 4.12 MM**

## GRADING RESULTS

Carat Weight	2.02 CARATS
Color Grade	D
Clarity Grade	VS 2



### ADDITIONAL GRADING INFORMATION

Polish	EXCELLENT
Symmetry	EXCELLENT
Fluorescence	NONE
Inscription(s)	 LG-655428615

Comments: This Laboratory Grown Diamond was created by Chemical Vapor Deposition (CVD) growth process.  
Type IIa



October 1, 2024	GI CORNERED RECT. MODIFIED BRILLIANT	2/12 CARATS	D	VS2	65.9%	66%	Medium	Polished	EXCELLENT	EXCELLENT	NONE	1881 LG455428615
	0.06 X 0.26 X 4.12 MM	Color Grade	Clarity Grade	Depth	Table	Girdle		Quiet	Polish	Symmetry	Fluorescence	inscriptions(s)
		Carat Weight										

Comments: Very Fine Growth Diamond was created by Chemical Vapor Deposition (CVD) growth process.

Type IIa