



**ELECTRONIC COPY**

## LABORATORY GROWN DIAMOND REPORT

|                         |                          |
|-------------------------|--------------------------|
| October 1, 2024         |                          |
| IGI Report Number       | LG655427748              |
| Description             | LABORATORY GROWN DIAMOND |
| Shape and Cutting Style | SQUARE CUSHION BRILLIANT |
| Measurements            | 6.69 X 6.50 X 4.30 MM    |

## GRADING RESULTS

|               |            |
|---------------|------------|
| Carat Weight  | 1.47 CARAT |
| Color Grade   | E          |
| Clarity Grade | VS 1       |

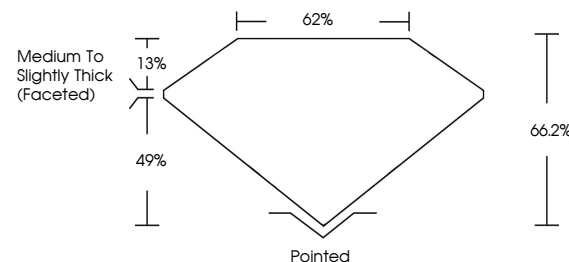
### ADDITIONAL GRADING INFORMATION

|                |                 |
|----------------|-----------------|
| Polish         | EXCELLENT       |
| Symmetry       | EXCELLENT       |
| Fluorescence   | NONE            |
| Inscription(s) | 151 LG655427748 |

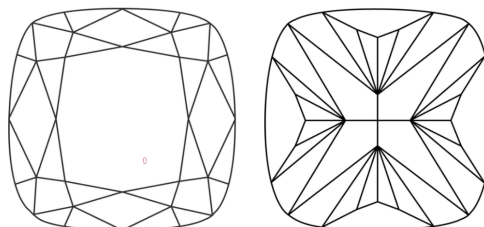
Comments: This Laboratory Grown Diamond was created by Chemical Vapor Deposition (CVD) growth process.  
Type IIa

LG655427748  
Report verification at [lgi.org](https://lgi.org)

## PROPORTIONS

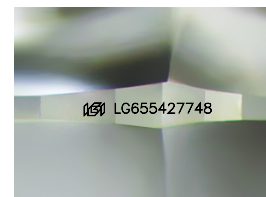


## CLARITY CHARACTERISTICS



### KEY TO SYMBOLS

Red symbols indicate internal characteristics.  
Green symbols indicate external characteristics.



Sample Image Used

**COLOR**

D E F G H I J Faint Very Light Light

## CLARITY

| IF                  | VVS <sup>1,2</sup>          | VS <sup>1,2</sup>      | SI <sup>1,2</sup> | I <sup>1,3</sup> |
|---------------------|-----------------------------|------------------------|-------------------|------------------|
| Internally Flawless | Very Very Slightly Included | Very Slightly Included | Slightly Included | Included         |



© IGI 2020, International Gemological Institute

FD - 10 20

**www.igi.org**

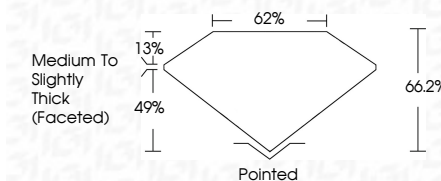
## LABORATORY GROWN DIAMOND REPORT



|                         |                          |
|-------------------------|--------------------------|
| October 1, 2024         |                          |
| IGI Report Number       | LG655427748              |
| Description             | LABORATORY GROWN DIAMOND |
| Shape and Cutting Style | SQUARE CUSHION BRILLIANT |
| Measurements            | 6.69 X 6.50 X 4.30 MM    |

## GRADING RESULTS

|               |            |
|---------------|------------|
| Carat Weight  | 1.47 CARAT |
| Color Grade   | E          |
| Clarity Grade | VS 1       |



### ADDITIONAL GRADING INFORMATION

|                |                 |
|----------------|-----------------|
| Polish         | EXCELLENT       |
| Symmetry       | EXCELLENT       |
| Fluorescence   | NONE            |
| Inscription(s) | 15 LG-655427748 |

Comments: This Laboratory Grown Diamond was created by Chemical Vapor Deposition (CVD) growth process.  
Type IIa



|                           |                 |                                  |
|---------------------------|-----------------|----------------------------------|
| October 1, 2024           | 1.47 CARAT      | E                                |
| GL Report No. LG656562748 | VS 1            | 66.2%                            |
| SQUARE CUSHION BRILLIANT  | Depth           | 62%                              |
| 16.9 x 6.9 x 4.30 MM      | Table           | Medium to Slightly Thick Faceted |
| Color Grade               | Grading         | Polished                         |
| Clarity Grade             | Fluorescence    | EXCELLENT                        |
| Weight                    | Symmetry        | EXCELLENT                        |
|                           | Inscriptions(s) | NONE                             |
|                           |                 | 6561 LG656562748                 |

Comments:  
 This Laboratory Grown Diamond was  
 created by Chemical Vapor Deposition  
 (CVD) growth process.  
 Type IIa