



ELECTRONIC COPY

LABORATORY GROWN DIAMOND REPORT

| | |
|-------------------------|--------------------------|
| October 1, 2024 | |
| IGI Report Number | LG655427541 |
| Description | LABORATORY GROWN DIAMOND |
| Shape and Cutting Style | SQUARE CUSHION BRILLIANT |
| Measurements | 6.46 X 6.45 X 4.39 MM |

GRADING RESULTS

| | |
|---------------|------------|
| Carat Weight | 1.46 CARAT |
| Color Grade | D |
| Clarity Grade | VS 1 |

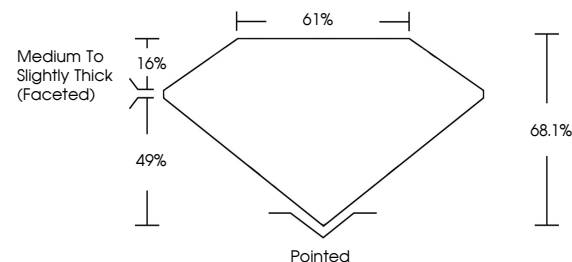
ADDITIONAL GRADING INFORMATION

| | |
|----------------|----------------|
| Polish | EXCELLENT |
| Symmetry | EXCELLENT |
| Fluorescence | NONE |
| Inscription(s) | 15 LG655427541 |

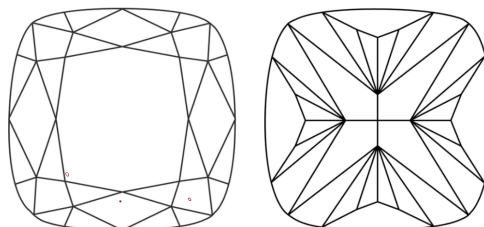
Comments: This Laboratory Grown Diamond was created by Chemical Vapor Deposition (CVD) growth process.
Type IIa

LG655427541
Report verification at lgi.org

PROPORTIONS

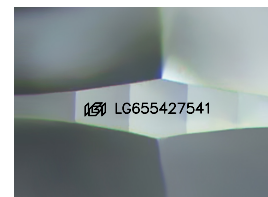


CLARITY CHARACTERISTICS



KEY TO SYMBOLS

Red symbols indicate internal characteristics.
Green symbols indicate external characteristics.



Sample Image Used

COLOR

D E F G H I J Faint Very Light Light

CLARITY

| IF | VVS ^{1,2} | VS ^{1,2} | SI ^{1,2} | I ^{1,3} |
|---------------------|-----------------------------|------------------------|-------------------|------------------|
| Internally Flawless | Very Very Slightly Included | Very Slightly Included | Slightly Included | Included |



© IGI 2020, International Gemological Institute

FD - 10 20

www.igi.org

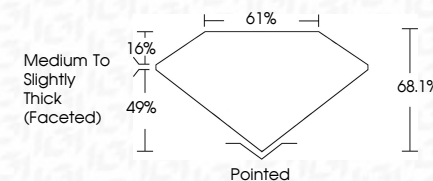
LABORATORY GROWN DIAMOND REPORT



| | |
|-------------------------|--------------------------|
| October 1, 2024 | |
| IGI Report Number | LG655427541 |
| Description | LABORATORY GROWN DIAMOND |
| Shape and Cutting Style | SQUARE CUSHION BRILLIANT |
| Measurements | 6.46 X 6.45 X 4.39 MM |

GRADING RESULTS

| | |
|---------------|------------|
| Carat Weight | 1.46 CARAT |
| Color Grade | D |
| Clarity Grade | VS 1 |



ADDITIONAL GRADING INFORMATION

| | |
|----------------|-----------------|
| Polish | EXCELLENT |
| Symmetry | EXCELLENT |
| Fluorescence | NONE |
| Inscription(s) | 15 LG-655427541 |

Comments: This Laboratory Grown Diamond was created by Chemical Vapor Deposition (CVD) growth process.
Type IIa



IG

| | |
|---------------------------|----------------------------------|
| October 1, 2024 | 1.46 CARAT |
| GI Report No. LG555427541 | D |
| SQUARE CUSHION BRILLIANT | VS 1 |
| SQUARE CUSHION BRILLIANT | 68.1% |
| SQUARE CUSHION BRILLIANT | 61% |
| SQUARE CUSHION BRILLIANT | Medium to Slightly Thick Faceted |
| SQUARE CUSHION BRILLIANT | Pointed |
| SQUARE CUSHION BRILLIANT | EXCELLENT |
| SQUARE CUSHION BRILLIANT | EXCELLENT |
| SQUARE CUSHION BRILLIANT | NONE |
| SQUARE CUSHION BRILLIANT | 1691 LG555427541 |

Comments:

The Laboratory Grown Diamond was analyzed using Laser Assisted Vapor Deposition (LAVD) growth process.

Type IIG