



**ELECTRONIC COPY**

LG655415987  
Report verification at igi.org



October 1, 2024

IGI Report Number **LG655415987**

Description **LABORATORY GROWN DIAMOND**

Shape and Cutting Style **EMERALD CUT**

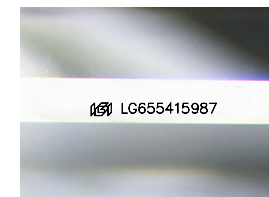
Measurements **9.09 X 6.48 X 4.31 MM**

**GRADING RESULTS**

Carat Weight **2.48 CARATS**

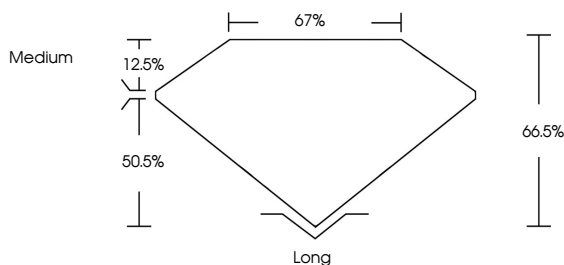
Color Grade **D**

Clarity Grade **VS 1**

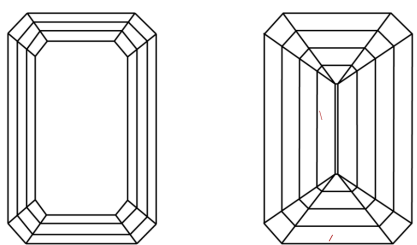


Sample Image Used

**PROPORTIONS**



**CLARITY CHARACTERISTICS**



**KEY TO SYMBOLS**

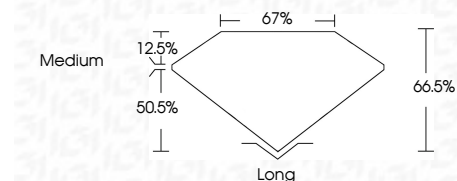
Red symbols indicate internal characteristics.  
Green symbols indicate external characteristics.

**COLOR**

D	E	F	G	H	I	J	Faint	Very Light	Light
---	---	---	---	---	---	---	-------	------------	-------

**CLARITY**

IF	VS <sup>1-2</sup>	VS <sup>1-2</sup>	SI <sup>1-2</sup>	I <sup>1-3</sup>
Internally Flawless	Very Very Slightly Included	Very Slightly Included	Slightly Included	Included



**ADDITIONAL GRADING INFORMATION**

Polish **EXCELLENT**

Symmetry **EXCELLENT**

Fluorescence **NONE**

Inscription(s) **IGI LG655415987**

Comments: This Laboratory Grown Diamond was created by Chemical Vapor Deposition (CVD) growth process. Type IIa



October 1, 2024  
IGI Report No. LG655415987  
**EMERALD CUT**

**2.48 CARATS**  
D

**9.09 X 6.48 X 4.31 MM**

Carat Weight  
Color Grade  
Clarity Grade  
Depth  
Table  
Girdle  
Medium

VS 1  
66.5%  
67%  
Medium

Long  
EXCELLENT  
EXCELLENT  
NONE  
IGI LG655415987

Culet  
Polish  
Symmetry  
Fluorescence  
Inscription(s)

Comments: This Laboratory Grown Diamond was created by Chemical Vapor Deposition (CVD) growth process. Type IIa