



ELECTRONIC COPY

LG655414472
Report verification at igi.org



September 28, 2024

IGI Report Number LG655414472

Description LABORATORY GROWN DIAMOND

Shape and Cutting Style CUSHION BRILLIANT

Measurements 7.09 X 5.11 X 3.47 MM

GRADING RESULTS

Carat Weight 1.02 CARAT

Color Grade E

Clarity Grade VS 1

September 28, 2024

IGI Report Number LG655414472

Description LABORATORY GROWN DIAMOND

Shape and Cutting Style CUSHION BRILLIANT

Measurements 7.09 X 5.11 X 3.47 MM

GRADING RESULTS

Carat Weight 1.02 CARAT

Color Grade E

Clarity Grade VS 1

ADDITIONAL GRADING INFORMATION

Polish EXCELLENT

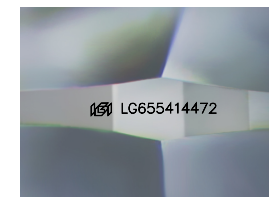
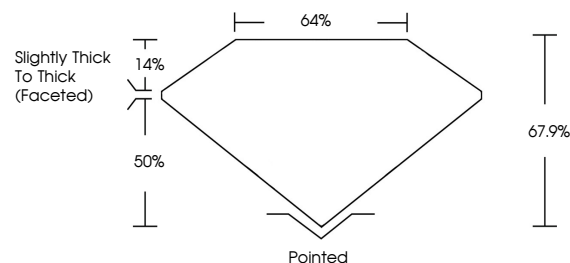
Symmetry EXCELLENT

Fluorescence NONE

Inscription(s) IGI LG655414472

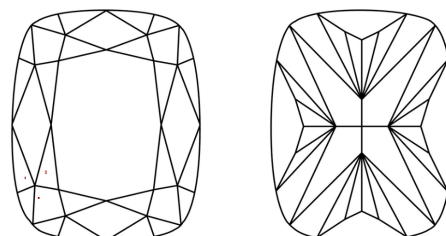
Comments: This Laboratory Grown Diamond was created by Chemical Vapor Deposition (CVD) growth process. Type IIa

PROPORTIONS



Sample Image Used

CLARITY CHARACTERISTICS



KEY TO SYMBOLS

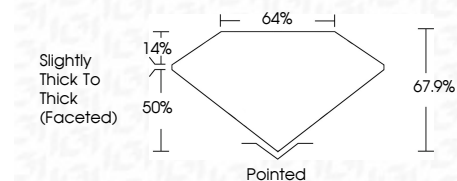
Red symbols indicate internal characteristics. Green symbols indicate external characteristics.

COLOR

D E F G H I J Faint Very Light Light

CLARITY

IF VS 1-2 VS 1-2 SI 1-2 I 1-3 Internally Flawless Very Very Slightly Included Very Slightly Included Slightly Included Included



ADDITIONAL GRADING INFORMATION

Polish EXCELLENT

Symmetry EXCELLENT

Fluorescence NONE

Inscription(s) IGI LG655414472

Comments: This Laboratory Grown Diamond was created by Chemical Vapor Deposition (CVD) growth process. Type IIa



IGI



September 28, 2024
IGI Report No LG655414472
CUSHION BRILLIANT
1.02 CARAT E
Color Grade VS 1
Depth 67.9%
Table 50%
Girdle Slightly Thick To Thick (Faceted)
Culet Pointed
Polish EXCELLENT
Symmetry EXCELLENT
Fluorescence NONE
Inscription(s) IGI LG655414472
Comments: This Laboratory Grown Diamond was created by Chemical Vapor Deposition (CVD) growth process. Type IIa