



ELECTRONIC COPY

LG654447545
Report verification at igi.org



September 27, 2024

IGI Report Number **LG654447545**

Description **LABORATORY GROWN DIAMOND**

Shape and Cutting Style **PRINCESS CUT**

Measurements **6.17 X 6.16 X 4.47 MM**

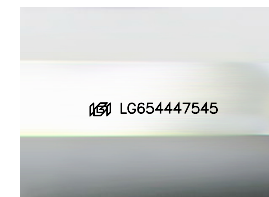
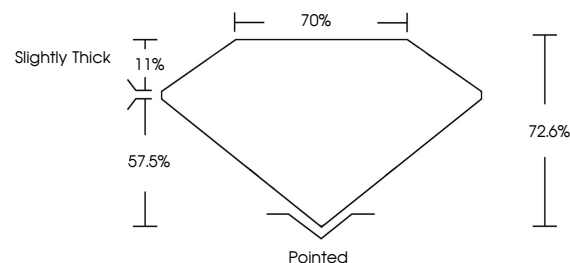
GRADING RESULTS

Carat Weight **1.48 CARAT**

Color Grade **E**

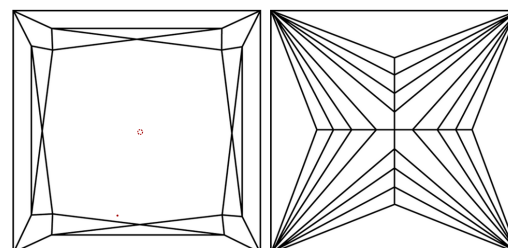
Clarity Grade **VS 1**

PROPORTIONS



Sample Image Used

CLARITY CHARACTERISTICS



KEY TO SYMBOLS

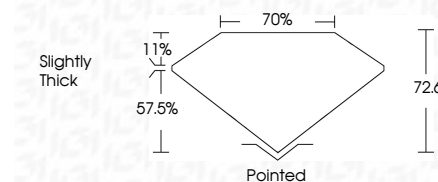
Red symbols indicate internal characteristics.
Green symbols indicate external characteristics.

COLOR

D E F G H I J Faint Very Light Light

CLARITY

IF	VS ¹⁻²	VS ¹⁻²	SI ¹⁻²	I ¹⁻³
Internally Flawless	Very Very Slightly Included	Very Slightly Included	Slightly Included	Included



ADDITIONAL GRADING INFORMATION

Polish **EXCELLENT**

Symmetry **EXCELLENT**

Fluorescence **NONE**

Inscription(s) **IGI LG654447545**

Comments: This Laboratory Grown Diamond was created by Chemical Vapor Deposition (CVD) growth process.
Type IIa



IGI

September 27, 2024
IGI Report No. LG654447545
PRINCESS CUT

1.48 CARAT
E

6.17 X 6.16 X 4.47 MM

Color Grade **E**
Clarity Grade **VS 1**
Depth **72.6%**
Table **70%**
Girdle **Slightly Thick**

Culet **Pointed**
Polish **EXCELLENT**
Symmetry **EXCELLENT**
Fluorescence **NONE**
Inscription(s) **IGI LG654447545**

Comments: This Laboratory Grown Diamond was created by Chemical Vapor Deposition (CVD) growth process.
Type IIa

