

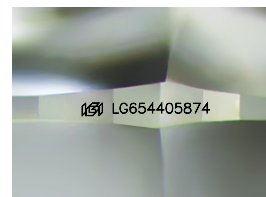
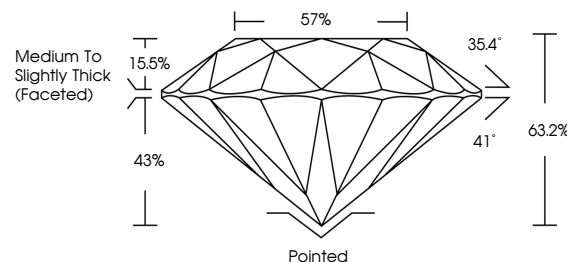


ELECTRONIC COPY

LABORATORY GROWN DIAMOND REPORT

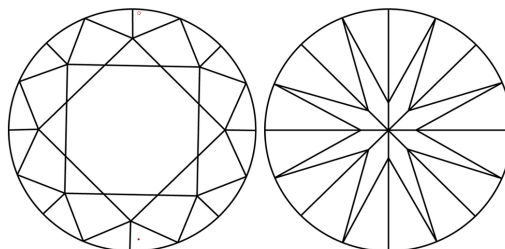
LG654405874
Report verification at lgi.org

PROPORTIONS



Sample Image Used

CLARITY CHARACTERISTICS



KEY TO SYMBOLS

Red symbols indicate internal characteristics.
Green symbols indicate external characteristics.

COLOR

D E F G H I J Faint Very Light Light

CLARITY

IF	VVS ^{1,2}	VS ^{1,2}	SI ^{1,2}	I ^{1,3}
Internally Flawless	Very Very Slightly Included	Very Slightly Included	Slightly Included	Included



© IGI 2020, International Gemological Institute

FD - 10 20

www.igi.org

LABORATORY GROWN DIAMOND REPORT



September 27, 2024

IGI Report Number LG654405874

Description **LABORATORY GROWN DIAMOND**Shape and Cutting Style **ROUND BRILLIANT**

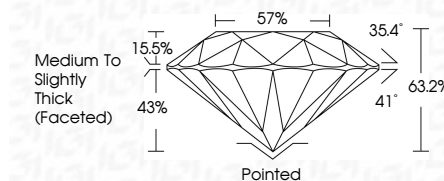
Measurements 6.47 - 6.52 X 4.11 MM

GRADING RESULTS

Carat Weight 1.08 CARAT

Color Grade **E**Clarity Grade WS 2

Cut Grade **EXCELLENT**



ADDITIONAL GRADING INFORMATION

Polish EXCELLENT

Symmetry **EXCELLENT**Fluorescence NONEInscription(s) LG654405874

Comments: This Laboratory Grown Diamond was created by Chemical Vapor Deposition (CVD) growth process.
Type IIa



September 27, 2024
GI Report No LG654405874
ROUND BRILLIANT

4.47 - 6.52 X 4.11 MM	1.08 CARAT	E
Color	VVS 2	EXCELLENT
Clarity Grade	63.2%	57%
Cut Grade	Medium to Slightly Thick (faceted)	Pointed
Depth		EXCELLENT
Table		EXCELLENT
Girdle		Symmetry
		Fluorescence
		None
		4mm 12454700574

Comments:
This Laboratory Grown Diamond was created by Chemical Vapor Deposition (CVD) growth process.