

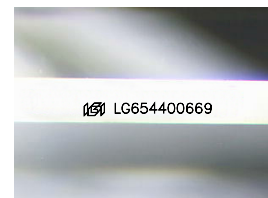
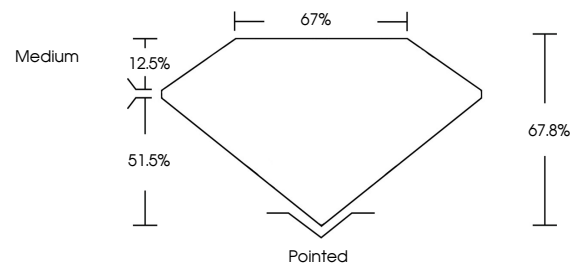


ELECTRONIC COPY

LABORATORY GROWN DIAMOND REPORT

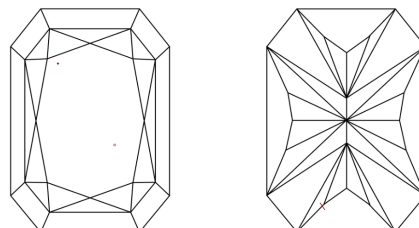
LG654400669
Report verification at lgi.org

PROPORTIONS



Sample Image Used

CLARITY CHARACTERISTICS



KEY TO SYMBOLS

Red symbols indicate internal characteristics.
Green symbols indicate external characteristics.

COLOR

D E F G H I J Faint Very Light Light

CLARITY

IF	VVS ¹⁻²	VS ¹⁻²	SI ¹⁻²	I ¹⁻³
Internally Flawless	Very Very Slightly Included	Very Slightly Included	Slightly Included	Included



© IGI 2020, International Gemological Institute

FD - 10 20

www.igi.org

LABORATORY GROWN DIAMOND REPORT



September 26, 2024

IGI Report Number **LG654400669**Description **LABORATORY GROWN DIAMOND**

Shape and Cutting Style

CUT CORNERED
RECTANGULAR MODIFIED
BRILLIANT

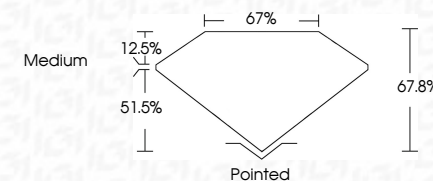
Measurements	11.87 X 8.53 X 5.78 MM
--------------	------------------------

GRADING RESULTS

Carat Weight **5.02 CARATS**

Color Grade E

Clarity Grade VS 1



ADDITIONAL GRADING INFORMATION

Polish **EXCELLENT**Symmetry **EXCELLENT**Fluorescence **NONE**Inscription(s)  LG654400669

Comments: This Laboratory Grown Diamond was created by Chemical Vapor Deposition (CVD) growth process.
Type IIa



September 26, 2024	GI Report No. LG56440069
CUT CORNERED RECT. MODIFIED BRILLIANT	
1.187 X 8.83 X 5.78 MM	5.02 CARATS
Color Grade	E
Clarity Grade	VS 1
Depth	67.8%
Table	67%
Grade	Medium
Polish	Polished
Symmetry	EXCELLENT
Fluorescence	EXCELLENT
Inscriptions(s)	NONE
	689 LG56440069

Comments:
 The Laboratory Grown Diamond was
 created by Chemical Vapor Deposition
 (CVD) growth process.
 type IIa