

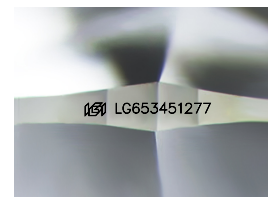
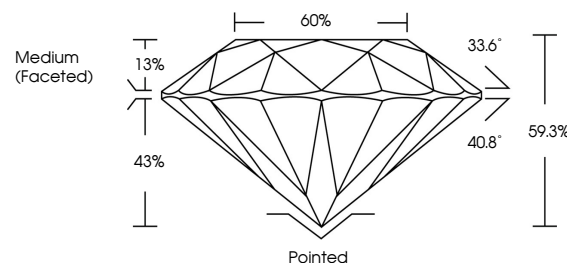


**ELECTRONIC COPY**

## LABORATORY GROWN DIAMOND REPORT

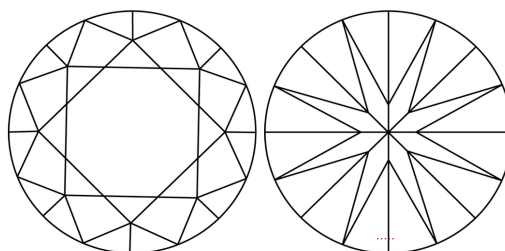
LG653451277  
Report verification at [iqi.org](https://iqi.org)

## PROPORTIONS



Sample Image Used

## CLARITY CHARACTERISTICS



### KEY TO SYMBOLS

Red symbols indicate internal characteristics.  
Green symbols indicate external characteristics.

## COLOR

D E F G H I J Faint Very Light Light

## CLARITY

IF	VVS <sup>1-2</sup>	VS <sup>1-2</sup>	SI <sup>1-2</sup>	I <sup>1-3</sup>
Internally Flawless	Very Very Slightly Included	Very Slightly Included	Slightly Included	Included



© IGI 2020, International Gemological Institute

FD - 10 20

**www.igi.org**

## LABORATORY GROWN DIAMOND REPORT



September 25, 2024

IGI Report Number **LG653451277**Description **LABORATORY GROWN DIAMOND**Shape and Cutting Style **ROUND BRILLIANT**

Measurements 8.31 - 8.35 X 4.94 MM

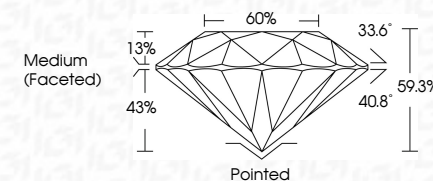
## GRADING RESULTS

Carat Weight **2.09 CARATS**

Color Grade H

Clarity Grade WS 1

Cut Grade **IDEAL**



### ADDITIONAL GRADING INFORMATION

Polish **EXCELLENT**Symmetry **EXCELLENT**Fluorescence **NONE**Inscription(s)  LG653451277

Comments: This Laboratory Grown Diamond was created by Chemical Vapor Deposition (CVD) growth process.  
Type IIa



September 25, 2024  
ICI Report No LG653451277  
ROUND BRILLIANT

3.31 - 8.35 X 4.94 MM	Carat Weight	2.09 CARATS
	Color Grade	H
	Clarity Grade	VVS 1
	Cut Grade	IDEAL
	Depth	59.3%
	Table	60%
	Girdle	Medium (Faceted)
	Culet	Pointed
	Polish	EXCELLENT
	Symmetry	EXCELLENT
	Fluorescence	NONE
	Report #	6454945772

**Comments:**  
This Laboratory Grown Diamond was created by Chemical Vapor Deposition (CVD) growth process.