



ELECTRONIC COPY

LG653438379 Report verification at igi.org



September 23, 2024 IGI Report Number LG653438379 Description LABORATORY GROWN DIAMOND Shape and Cutting Style CUT CORNERED RECTANGULAR MODIFIED BRILLIANT

Measurements 8.35 X 5.82 X 3.97 MM

GRADING RESULTS

Carat Weight 1.67 CARAT Color Grade E Clarity Grade VS 1

September 23, 2024 IGI Report Number LG653438379 Description LABORATORY GROWN DIAMOND Shape and Cutting Style CUT CORNERED RECTANGULAR MODIFIED BRILLIANT Measurements 8.35 X 5.82 X 3.97 MM

GRADING RESULTS

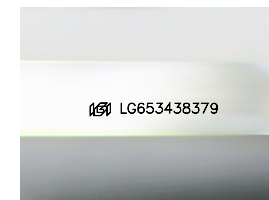
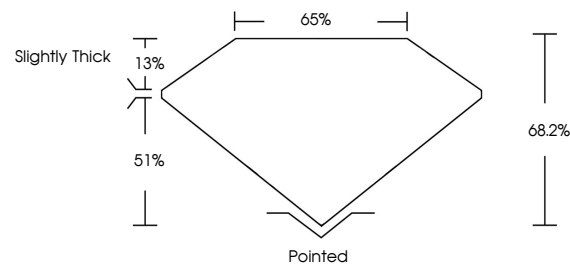
Carat Weight 1.67 CARAT Color Grade E Clarity Grade VS 1

ADDITIONAL GRADING INFORMATION

Polish EXCELLENT Symmetry EXCELLENT Fluorescence NONE Inscription(s) LG653438379

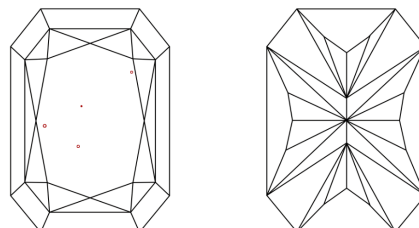
Comments: This Laboratory Grown Diamond was created by Chemical Vapor Deposition (CVD) growth process. Type IIa

PROPORTIONS



Sample Image Used

CLARITY CHARACTERISTICS



KEY TO SYMBOLS

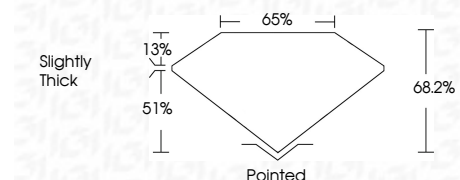
Red symbols indicate internal characteristics. Green symbols indicate external characteristics.

COLOR

D E F G H I J Faint Very Light Light

CLARITY

IF WVS 1-2 VS 1-2 SI 1-2 I 1-3 Internally Flawless Very Very Slightly Included Very Slightly Included Slightly Included Included



ADDITIONAL GRADING INFORMATION

Polish EXCELLENT Symmetry EXCELLENT Fluorescence NONE Inscription(s) LG653438379 Comments: This Laboratory Grown Diamond was created by Chemical Vapor Deposition (CVD) growth process. Type IIa



September 23, 2024 IGI Report No. LG653438379 CUT CORNERED RECT. MODIFIED BRILLIANT 1.67 CARAT E VS 1 68.2% 65% Slightly Thick Pointed EXCELLENT EXCELLENT NONE NONE LG653438379 Comments: This Laboratory Grown Diamond was created by Chemical Vapor Deposition (CVD) growth process. Type IIa