

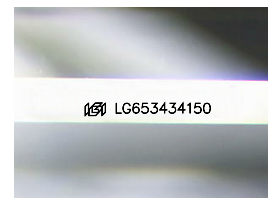
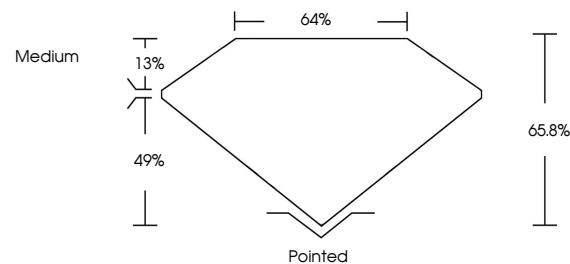


**ELECTRONIC COPY**

## LABORATORY GROWN DIAMOND REPORT

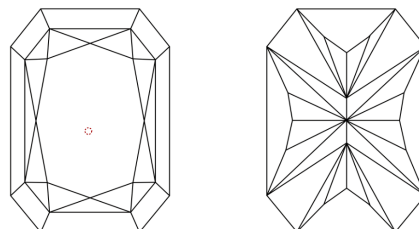
LG653434150  
Report verification at [igi.org](https://igi.org)

## PROPORTIONS



Sample Image Used

## CLARITY CHARACTERISTICS



### KEY TO SYMBOLS

Red symbols indicate internal characteristics.  
Green symbols indicate external characteristics.

**COLOR**

D E F G H I J Faint Very Light Light

## CLARITY

IF	VVS <sup>1,2</sup>	VS <sup>1,2</sup>	SI <sup>1,2</sup>	I <sup>1,3</sup>
Internally Flawless	Very Very Slightly Included	Very Slightly Included	Slightly Included	Included



© IGI 2020, International Gemological Institute

FD - 10 20

**www.igi.org**

## LABORATORY GROWN DIAMOND REPORT



September 21, 2024

IGI Report Number **LG653434150**Description **LABORATORY GROWN DIAMOND**

Shape and Cutting Style

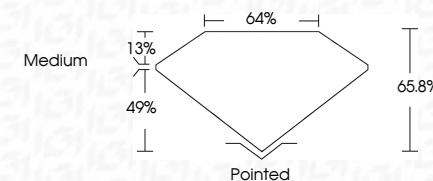
Measurements **9.12 X 6.28 X 4.13 MM**

## GRADING RESULTS

Carat Weight **2.05 CARATS**

Color Grade D

Clarity Grade VS 1



### ADDITIONAL GRADING INFORMATION

Polish EXCELLENT

Symmetry **EXCELLENT**Fluorescence NONEInscription(s)  LG653434150

Comments: This Laboratory Grown Diamond was created by Chemical Vapor Deposition (CVD) growth process.  
Type IIa



IG

September 21, 2024	GI Report No LG5634160	
CUT CORNERED RECT. MODIFIED BRILLIANT		
2.12 X 4.26 X 4.13 MM		
2.05 CARATS		
D	Vs 1	65.6%
		64%
	Medium	
	Pointed	
	EXCELLENT	
	NONE	
	iG1 LG5634160	
Carat Weight	Clarity Grade	Depth
Color Grade	Table	Symmetry
	Girdle	Fluorescence
		Inscriptions(s)
Comments:		
This Laboratory Grown Diamond was created by Chemical Vapor Deposition (CVD) growth process.		
Type IId		