



ELECTRONIC COPY

LABORATORY GROWN DIAMOND REPORT

September 14, 2024  
IGI Report Number LG652445005  
Description LABORATORY GROWN DIAMOND  
Shape and Cutting Style EMERALD CUT  
Measurements 7.71 X 5.49 X 3.79 MM

GRADING RESULTS

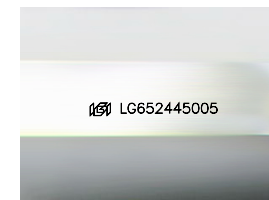
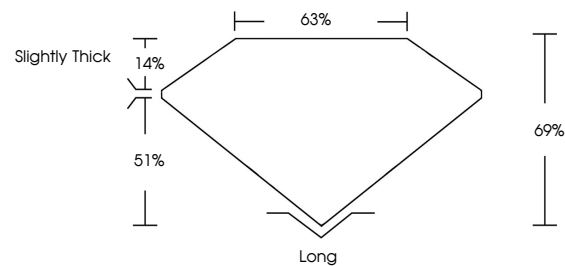
Carat Weight 1.59 CARAT  
Color Grade E  
Clarity Grade VS 1

ADDITIONAL GRADING INFORMATION

Polish EXCELLENT  
Symmetry EXCELLENT  
Fluorescence NONE  
Inscription(s) IGI LG652445005

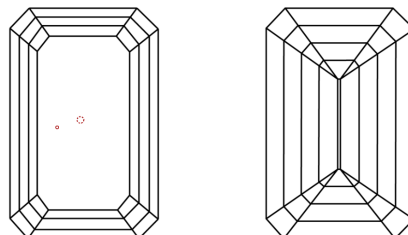
Comments: This Laboratory Grown Diamond was created by Chemical Vapor Deposition (CVD) growth process. Type IIa

PROPORTIONS



Sample Image Used

CLARITY CHARACTERISTICS



KEY TO SYMBOLS

Red symbols indicate internal characteristics.  
Green symbols indicate external characteristics.

COLOR

D E F G H I J Faint Very Light Light

CLARITY

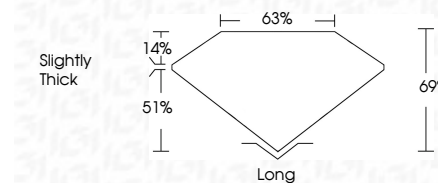
IF VS 1-2 VS 1-2 SI 1-2 I 1-3  
Internally Flawless Very Very Slightly Included Very Slightly Included Slightly Included Included



September 14, 2024  
IGI Report Number LG652445005  
Description LABORATORY GROWN DIAMOND  
Shape and Cutting Style EMERALD CUT  
Measurements 7.71 X 5.49 X 3.79 MM

GRADING RESULTS

Carat Weight 1.59 CARAT  
Color Grade E  
Clarity Grade VS 1



ADDITIONAL GRADING INFORMATION

Polish EXCELLENT  
Symmetry EXCELLENT  
Fluorescence NONE  
Inscription(s) IGI LG652445005  
Comments: This Laboratory Grown Diamond was created by Chemical Vapor Deposition (CVD) growth process. Type IIa



September 14, 2024  
IGI Report No. LG652445005  
EMERALD CUT  
7.71 X 5.49 X 3.79 MM  
Carat Weight 1.59 CARAT  
Color Grade E  
Clarity Grade VS 1  
Depth 69%  
Table 63%  
Girdle Slightly Thick  
Culet Long  
Polish EXCELLENT  
Symmetry EXCELLENT  
Fluorescence NONE  
Inscription(s) IGI LG652445005  
Comments: This Laboratory Grown Diamond was created by Chemical Vapor Deposition (CVD) growth process. Type IIa