



ELECTRONIC COPY

LG652407616
Report verification at igi.org



September 21, 2024

IGI Report Number LG652407616

Description LABORATORY GROWN DIAMOND

Shape and Cutting Style ROUND BRILLIANT

Measurements 10.02 - 10.05 X 6.21 MM

GRADING RESULTS

Carat Weight 3.86 CARATS

Color Grade E

Clarity Grade VS 2

Cut Grade IDEAL

September 21, 2024
IGI Report Number LG652407616
Description LABORATORY GROWN DIAMOND
Shape and Cutting Style ROUND BRILLIANT
Measurements 10.02 - 10.05 X 6.21 MM

GRADING RESULTS

Carat Weight 3.86 CARATS

Color Grade E

Clarity Grade VS 2

Cut Grade IDEAL

ADDITIONAL GRADING INFORMATION

Polish EXCELLENT

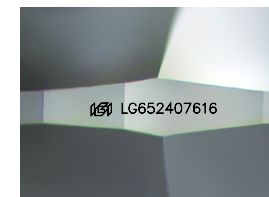
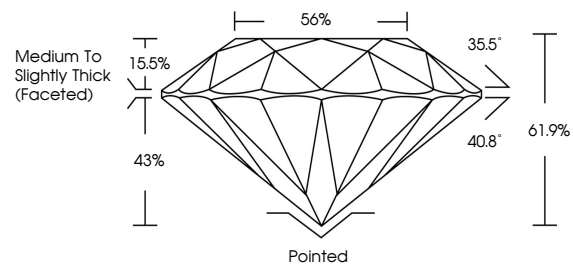
Symmetry EXCELLENT

Fluorescence NONE

Inscription(s) IGI LG652407616

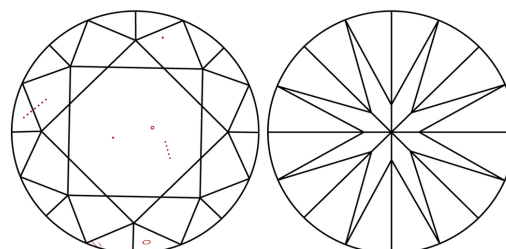
Comments: This Laboratory Grown Diamond was created by Chemical Vapor Deposition (CVD) growth process. Type IIa

PROPORTIONS



Sample Image Used

CLARITY CHARACTERISTICS



KEY TO SYMBOLS

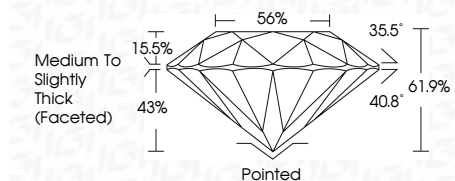
Red symbols indicate internal characteristics. Green symbols indicate external characteristics.

COLOR

D E F G H I J Faint Very Light Light

CLARITY

Table with columns for clarity grades: IF, VS 1-2, VS 1-2, SI 1-2, I 1-3. Rows for descriptions: Internally Flawless, Very Very Slightly Included, Very Slightly Included, Slightly Included, Included.



ADDITIONAL GRADING INFORMATION

Polish EXCELLENT

Symmetry EXCELLENT

Fluorescence NONE

Inscription(s) IGI LG652407616

Comments: This Laboratory Grown Diamond was created by Chemical Vapor Deposition (CVD) growth process. Type IIa



Summary table of report details: September 21, 2024, IGI Report No LG652407616, ROUND BRILLIANT, 10.02 - 10.05 X 6.21 MM, 3.86 CARATS, E, VS 2, IDEAL, 61.9%, 56%, Medium To Slightly Thick (Faceted), Pointed, EXCELLENT, EXCELLENT, NONE, IGI LG652407616. Includes comments on CVD growth process and Type IIa classification.