

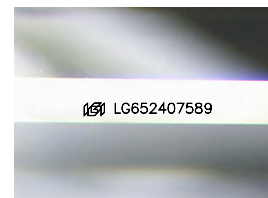
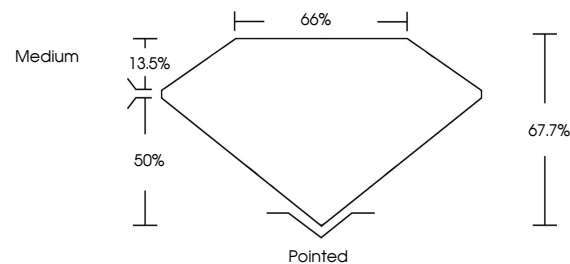


ELECTRONIC COPY

LABORATORY GROWN DIAMOND REPORT

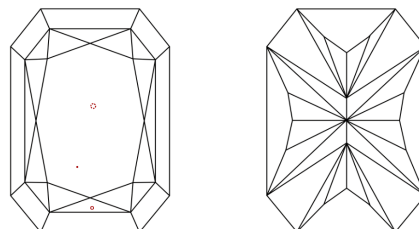
LG652407589
Report verification at igi.org

PROPORTIONS



Sample Image Used

CLARITY CHARACTERISTICS



KEY TO SYMBOLS

Red symbols indicate internal characteristics.
Green symbols indicate external characteristics.

COLOR

D E F G H I J Faint Very Light Light

CLARITY

IF	VVS ¹⁻²	VS ¹⁻²	SI ¹⁻²	I ¹⁻³
Internally Flawless	Very Very Slightly Included	Very Slightly Included	Slightly Included	Included



© IGI 2020, International Gemological Institute

FD - 10 20

www.igi.org

LABORATORY GROWN DIAMOND REPORT



September 21, 2024

IGI Report Number **LG652407589**Description **LABORATORY GROWN DIAMOND**

Shape and Cutting Style

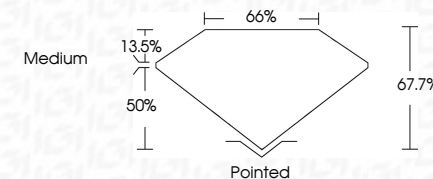
Measurements 12.24 X 8.47 X 5.73 MM

GRADING RESULTS

Carat Weight **5.12 CARATS**

Color Grade E

Clarity Grade VS 1



ADDITIONAL GRADING INFORMATION

Polish EXCELLENT

Symmetry **EXCELLENT**Fluorescence NONEInscription(s) LG652407589

Comments: This Laboratory Grown Diamond was created by Chemical Vapor Deposition (CVD) growth process.
Type IIa



September 21, 2024	
GJ REPORT NO LG652407899	
CUT CORNERED RECT. MODIFIED BRILLIANT	
5.12 CARATS	
Vs I	
67.7%	
66%	
Medium	
Polished	
EXCELLENT	
EXCELLENT	
NONE	
LG1 LG6569407899	
Comments:	
This Laboratory Grown Diamond was created by Chemical Vapor Deposition (CVD) growth process.	
Type IIa	