



ELECTRONIC COPY

LG651468536 Report verification at igi.org



September 6, 2024

IGI Report Number LG651468536

Description LABORATORY GROWN DIAMOND

Shape and Cutting Style CUSHION BRILLIANT

Measurements 12.15 X 8.90 X 5.93 MM

GRADING RESULTS

Carat Weight 5.06 CARATS

Color Grade F

Clarity Grade VVS 2

LABORATORY GROWN DIAMOND REPORT

September 6, 2024

IGI Report Number LG651468536

Description LABORATORY GROWN DIAMOND

Shape and Cutting Style CUSHION BRILLIANT

Measurements 12.15 X 8.90 X 5.93 MM

GRADING RESULTS

Carat Weight 5.06 CARATS

Color Grade F

Clarity Grade VVS 2

ADDITIONAL GRADING INFORMATION

Polish EXCELLENT

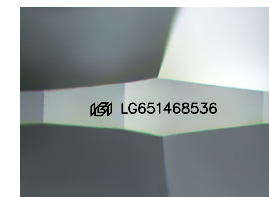
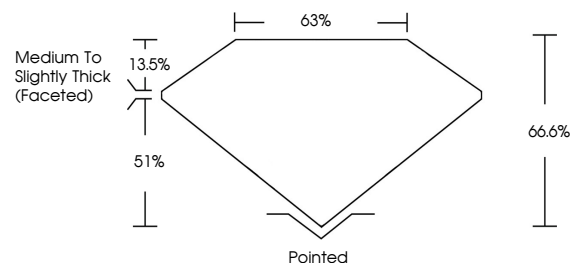
Symmetry EXCELLENT

Fluorescence NONE

Inscription(s) IGI LG651468536

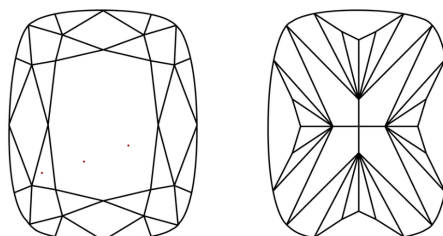
Comments: This Laboratory Grown Diamond was created by Chemical Vapor Deposition (CVD) growth process. Type IIa

PROPORTIONS



Sample Image Used

CLARITY CHARACTERISTICS



KEY TO SYMBOLS

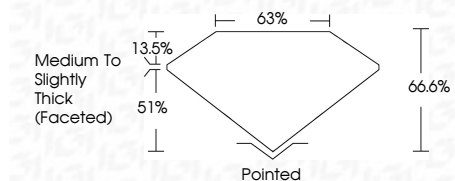
Red symbols indicate internal characteristics. Green symbols indicate external characteristics.

COLOR

D E F G H I J Faint Very Light Light

CLARITY

IF VVS 1-2 VS 1-2 SI 1-2 I 1-3 Internally Flawless Very Very Slightly Included Very Slightly Included Slightly Included Included



ADDITIONAL GRADING INFORMATION

Polish EXCELLENT

Symmetry EXCELLENT

Fluorescence NONE

Inscription(s) IGI LG651468536

Comments: This Laboratory Grown Diamond was created by Chemical Vapor Deposition (CVD) growth process. Type IIa



IGI



Summary of report details including date, report number, description, measurements, grading results (5.06 CARATS, F, VVS 2), and additional information (EXCELLENT Polish/Symmetry, NONE Fluorescence, IGI LG651468536 inscription).

Comments: This Laboratory Grown Diamond was created by Chemical Vapor Deposition (CVD) growth process. Type IIa