



**ELECTRONIC COPY**

## LABORATORY GROWN DIAMOND REPORT

|                         |                          |
|-------------------------|--------------------------|
| September 6, 2024       |                          |
| IGI Report Number       | LG651465760              |
| Description             | LABORATORY GROWN DIAMOND |
| Shape and Cutting Style | ROUND BRILLIANT          |
| Measurements            | 7.22 - 7.21 X 4.49 MM    |

## GRADING RESULTS

|               |            |
|---------------|------------|
| Carat Weight  | 1.46 CARAT |
| Color Grade   | E          |
| Clarity Grade | VS 1       |
| Cut Grade     | EXCELLENT  |

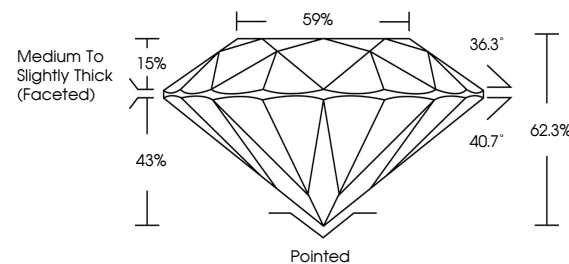
### ADDITIONAL GRADING INFORMATION

|                |   |
|----------------|---|
| Polish         | EXCELLENT   |
| Symmetry       | EXCELLENT   |
| Fluorescence   | NONE  |
| Inscription(s) |  LG651465760 |

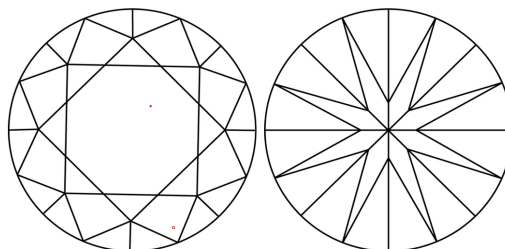
Comments: This Laboratory Grown Diamond was created by Chemical Vapor Deposition (CVD) growth process.  
Type IIa

LG651465760  
Report verification at [igi.org](https://igi.org)

## PROPORTIONS

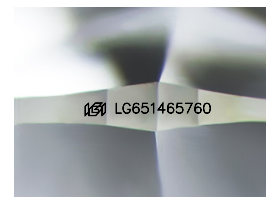


## CLARITY CHARACTERISTICS



### KEY TO SYMBOLS

Red symbols indicate internal characteristics.  
Green symbols indicate external characteristics.



Sample Image Used

## COLOR

D E F G H I J Faint Very Light Light

## CLARITY

IF WS<sup>1-2</sup> VS<sup>1-2</sup> SI<sup>1-2</sup> |<sup>1-3</sup>

|                        |                                |                           |                      |          |
|------------------------|--------------------------------|---------------------------|----------------------|----------|
| Internally<br>Flawless | Very Very<br>Slightly Included | Very<br>Slightly Included | Slightly<br>Included | Included |
|------------------------|--------------------------------|---------------------------|----------------------|----------|

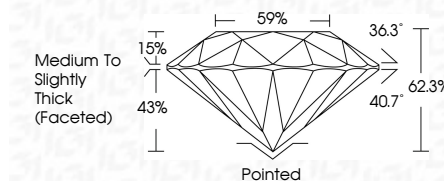
## LABORATORY GROWN DIAMOND REPORT



|                         |                          |
|-------------------------|--------------------------|
| September 6, 2024       |                          |
| IGI Report Number       | LG651465760              |
| Description             | LABORATORY GROWN DIAMOND |
| Shape and Cutting Style | ROUND BRILLIANT          |
| Measurements            | 7.22 - 7.21 X 4.49 MM    |

## GRADING RESULTS

|               |            |
|---------------|------------|
| Carat Weight  | 1.46 CARAT |
| Color Grade   | E          |
| Clarity Grade | VS 1       |
| Cut Grade     | EXCELLENT  |



### ADDITIONAL GRADING INFORMATION

|  |                                   |
|--|-----------------------------------|
| Polish   | EXCELLENT                         |
| Symmetry   | EXCELLENT                         |
| Fluorescence   | NONE                              |
| Inscription(s)   | <del>LG51465760</del> LG651465760 |
| Comments: This Laboratory Grown Diamond was created by Chemical Vapor Deposition (CVD) growth process. |                                   |
| Type IIa   |                                   |



© IGI 2020, International Gemological Institute

FD - 10 20



THIS DOCUMENT WAS PRODUCED WITH THE FOLLOWING SECURITY MEASURES: SPECIAL DOCUMENT PAPER, INK SCREENS, WATERMARK, BACKGROUND DESIGNS, HOLOGRAM AND OTHER SECURITY FEATURES NOT LISTED AND DO EXCEED DOCUMENT SECURITY INDUSTRY GUIDELINE

**www.igi.org**

September 6, 2024  
IGI Report No LG6514  
ROUND BRILLIANT

|                       |               |                                    |
|-----------------------|---------------|------------------------------------|
| 7.72 - 7.21 X 4.49 MM | Carat Weight  | 1.46 CARAT                         |
|                       | Color Grade   | E                                  |
|                       | Clarity Grade | VS 1                               |
|                       | Cut Grade     | EXCELLENT                          |
|                       | Depth         | 62.9%                              |
|                       | Table         | 59%                                |
|                       | Girdle        | Medium To Slightly Thick (Faceted) |
|                       | Culet         | Pointed                            |
|                       | Polish        | EXCELLENT                          |
|                       | Symmetry      | EXCELLENT                          |
|                       | Fluorescence  | NONE                               |

**Comments:**  
This Laboratory Grown Diamond was created by Chemical Vapor Deposition (CVD) growth process.