



ELECTRONIC COPY

LABORATORY GROWN DIAMOND REPORT

August 31, 2024	
IGI Report Number	LG650477524
Description	LABORATORY GROWN DIAMOND
Shape and Cutting Style	SQUARE CUSHION BRILLIANT
Measurements	6.80 X 6.68 X 4.54 MM

GRADING RESULTS

Carat Weight	1.58 CARAT
Color Grade	F
Clarity Grade	VS 1

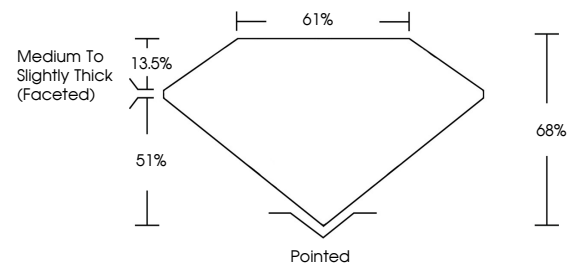
ADDITIONAL GRADING INFORMATION

Polish	EXCELLENT
Symmetry	EXCELLENT
Fluorescence	NONE
Inscription(s)	 LG650477524

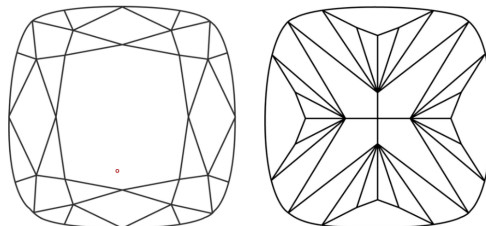
Comments: This Laboratory Grown Diamond was created by Chemical Vapor Deposition (CVD) growth process.
Type IIa

LG650477524
Report verification at igi.org

PROPORTIONS

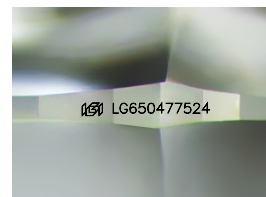


CLARITY CHARACTERISTICS



KEY TO SYMBOLS

Red symbols indicate internal characteristics.
Green symbols indicate external characteristics.



Sample Image Used

COLOR

D E F G H I J Faint Very Light Light

CLARITY

IF	VVS ¹⁻²	VS ¹⁻²	SI ¹⁻²	I ¹⁻³
Internally Flawless	Very Very Slightly Included	Very Slightly Included	Slightly Included	Included

LABORATORY GROWN DIAMOND REPORT



August 31, 2024	
IGI Report Number	LG650477524
Description	LABORATORY GROWN DIAMOND
Shape and Cutting Style	SQUARE CUSHION BRILLIANT
Measurements	6.80 X 6.68 X 4.54 MM

GRADING RESULTS

Carat Weight	1.58 CARAT
Color Grade	F
Clarity Grade	VS 1

ADDITIONAL GRADING INFORMATION

Polish	EXCELLENT
Symmetry	EXCELLENT
Fluorescence	NONE
Inscription(s)	 LG650477524
<p>Comments: This Laboratory Grown Diamond was created by Chemical Vapor Deposition (CVD) growth process.</p> <p>Type IIa</p>	



© IGI 2020, International Gemological Institute

FD - 10 20



THIS DOCUMENT WAS PRODUCED WITH THE FOLLOWING SECURITY MEASURES: SPECIAL DOCUMENT PAPER, INK SCREENS, WATERMARK, BACKGROUND DESIGNS, HOLOGRAM AND OTHER SECURITY FEATURES NOT LISTED AND DO EXCEED DOCUMENT SECURITY INDUSTRY GUIDELINES

www.igi.org

August 31, 2024

5.80 X 6.68 X .454 MM		1.58 CARAT
Carat Weight		F
Color Grade		VS 1
Clarity Grade		68%
Depth		61%
Table		Medium To Slightly Thick (cushion)
Girdle		Pointed
Quiet		EXCELLENT
Polish		EXCELLENT
Symmetry		EXCELLENT
Fluorescence		NONE
Production No.		4441 C454V727504

Comments:
This Laboratory Grown Diamond was created by Chemical Vapor Deposition (CVD) growth process.