



**ELECTRONIC COPY**

## LABORATORY GROWN DIAMOND REPORT

September 2, 2024	
IGI Report Number	LG650400608
Description	LABORATORY GROWN DIAMOND
Shape and Cutting Style	CUSHION BRILLIANT
Measurements	8.84 X 6.61 X 4.46 MM

## GRADING RESULTS

Carat Weight	2.07 CARATS
Color Grade	E
Clarity Grade	VVS 2

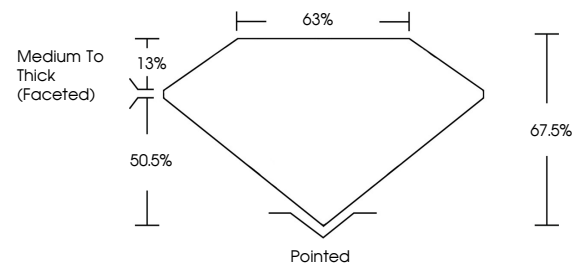
### ADDITIONAL GRADING INFORMATION

Polish	EXCELLENT
Symmetry	EXCELLENT
Fluorescence	NONE
Inscription(s)	 LG650400608

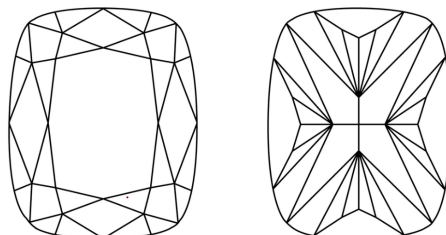
Comments: This Laboratory Grown Diamond was created by Chemical Vapor Deposition (CVD) growth process.  
Type IIa

LG650400608  
Report verification at [igi.org](http://igi.org)

## PROPORTIONS

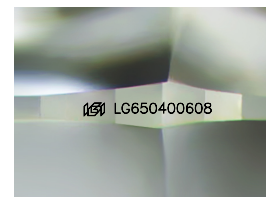


## CLARITY CHARACTERISTICS



## KEY TO SYMBOLS

Red symbols indicate internal characteristics.  
Green symbols indicate external characteristics.



Sample Image Used

## COLOR

D E F G H I J Faint Very Light Light

## CLARITY

IF	VS <sup>1-2</sup>	VS <sup>1-2</sup>	SI <sup>1-2</sup>	I <sup>1-3</sup>
Internally Flawless	Very Very Slightly Included	Very Slightly Included	Slightly Included	Included

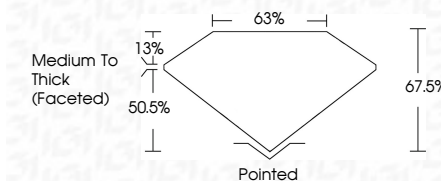
## LABORATORY GROWN DIAMOND REPORT



September 2, 2024	
IGI Report Number	LG650400608
Description	LABORATORY GROWN DIAMOND
Shape and Cutting Style	CUSHION BRILLIANT
Measurements	8.84 X 6.61 X 4.46 MM

## GRADING RESULTS

Carat Weight	2.07 CARATS
Color Grade	E
Clarity Grade	VVS 2



### ADDITIONAL GRADING INFORMATION

Polish	EXCELLENT
Symmetry	EXCELLENT
Fluorescence	NONE
Inscription(s)	 LG6650400608
<p>Comments: This Laboratory Grown Diamond was created by Chemical Vapor Deposition (CVD) growth process.</p> <p>Type IIa</p>	



© IGI 2020, International Gemological Institute

FD - 10 20



THIS DOCUMENT WAS PRODUCED WITH THE FOLLOWING SECURITY MEASURES: SPECIAL DOCUMENT PAPER, INK SCREENS, WATERMARK, BACKGROUND DESIGNS, HOLOGRAM AND OTHER SECURITY FEATURES NOT LISTED AND DO EXCEED DOCUMENT SECURITY INDUSTRY GUIDELINES

**www.igi.org**

September 2, 2024  
 GFI Report No LG650400608  
 CUSHION BRILLIANT

CUSHION BRILLIANT		6.84 X 6.61 X 4.46 MM		2.07 CARATS
		Carat Weight		
		Color Grade		
		Clarity Grade		
		Depth	VVS 2	
		Table	67.0%	
		Girdle	65%	
		Culet	Medium to Thick (faceted)	
		Polish	Pointed	
		Symmetry	EXCELLENT	
Fluorescence	EXCELLENT			
Measurements (mm)	NONE			
Measurements (mm)	see certificate			

**Comments:**  
This Laboratory Grown Diamond was created by Chemical Vapor Deposition (CVD) growth process.