



**ELECTRONIC COPY**

## LABORATORY GROWN DIAMOND REPORT

August 28, 2024	
IGI Report Number	LG649428839
Description	LABORATORY GROWN DIAMOND
Shape and Cutting Style	OVAL BRILLIANT
Measurements	8.82 X 6.55 X 4.02 MM

## GRADING RESULTS

Carat Weight	1.46 CARAT
Color Grade	D
Clarity Grade	VS 2

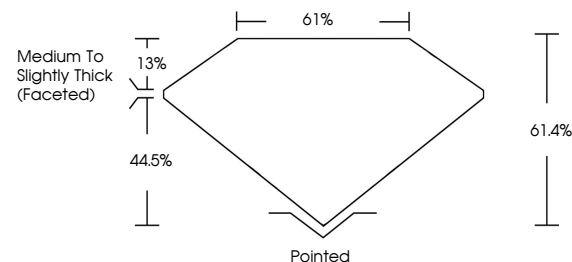
### ADDITIONAL GRADING INFORMATION

Polish	EXCELLENT
Symmetry	EXCELLENT
Fluorescence	NONE
Inscription(s)	151 LG649428839

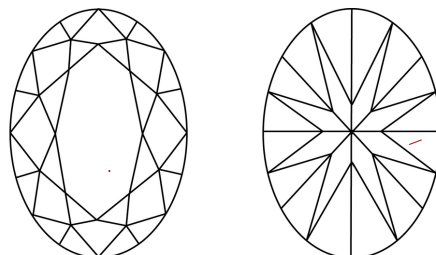
Comments: This Laboratory Grown Diamond was created by Chemical Vapor Deposition (CVD) growth process.  
Type IIa

LG649428839  
Report verification at [lgi.org](https://lgi.org)

## PROPORTIONS



## CLARITY CHARACTERISTICS



## KEY TO SYMBOLS

Red symbols indicate internal characteristics.  
Green symbols indicate external characteristics.

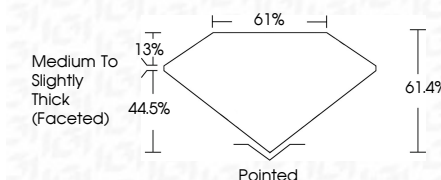
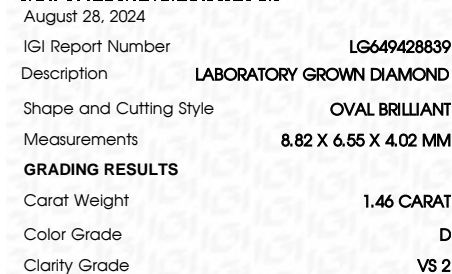


## COLOR

D E F G H I J Faint Very Light Light

## CLARITY

IF	VS <sup>1-2</sup>	VS <sup>1-2</sup>	SI <sup>1-2</sup>	I <sup>1-3</sup>
Internally Flawless	Very Very Slightly Included	Very Slightly Included	Slightly Included	Included



### ADDITIONAL GRADING INFORMATION

Polish	EXCELLENT
Symmetry	EXCELLENT
Fluorescence	NONE
Inscription(s)	 LG649428839
<p>Comments: This Laboratory Grown Diamond was created by Chemical Vapor Deposition (CVD) growth process.</p> <p>Type IIa</p>	



© IGI 2020, International Gemological Institute

FD - 10 20



August 28, 2024  
GJ Report No | G649428839

<b>Report No.</b>	US649428839
<b>DIAL BRILLANT</b>	
<b>Cut</b>	EXCEL X 4.02 MM
<b>Carat Weight</b>	1.46 CARAT
<b>Color Grade</b>	D
<b>Clarity Grade</b>	VVS 2
<b>Depth</b>	61.6%
<b>Table</b>	61%
<b>Grade</b>	Medium to Slightly Thick (Accepted)
<b>Culet</b>	Poished
<b>Polish</b>	EXCELLENT
<b>Symmetry</b>	EXCELLENT
<b>Fluorescence</b>	NONE
<b>Comments</b>	See Certificate

**Comments:**  
This Laboratory Grown Diamond was  
created by Chemical Vapor Deposition  
(CVD) growth process.

**www.igi.org**