



ELECTRONIC COPY

LG648464227
Report verification at igi.org



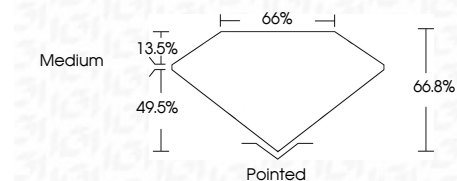
August 23, 2024
IGI Report Number LG648464227
Description LABORATORY GROWN DIAMOND

Shape and Cutting Style CUT CORNERED RECTANGULAR MODIFIED BRILLIANT

Measurements 8.15 X 5.69 X 3.80 MM

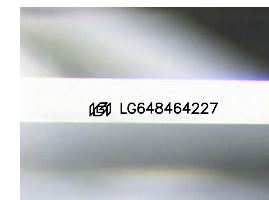
GRADING RESULTS

Carat Weight 1.52 CARAT
Color Grade D
Clarity Grade VS 1



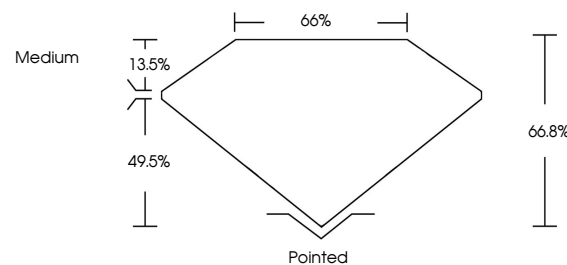
ADDITIONAL GRADING INFORMATION

Polish EXCELLENT
Symmetry EXCELLENT
Fluorescence NONE
Inscription(s) IGI LG648464227
Comments: This Laboratory Grown Diamond was created by Chemical Vapor Deposition (CVD) growth process. Type IIa

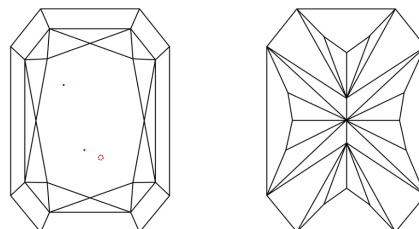


Sample Image Used

PROPORTIONS



CLARITY CHARACTERISTICS



KEY TO SYMBOLS

Red symbols indicate internal characteristics.
Green symbols indicate external characteristics.

COLOR

D E F G H I J Faint Very Light Light

CLARITY

IF WS 1-2 VS 1-2 SI 1-2 I 1-3
Internally Flawless Very Very Slightly Included Very Slightly Included Slightly Included Included



August 23, 2024
IGI Report No LG648464227
CUT CORNERED RECT. MODIFIED BRILLIANT
8.15 X 5.69 X 3.80 MM
1.52 CARAT
D
VS 1
66.8%
66%
Medium
Pointed
EXCELLENT
EXCELLENT
NONE
IGI LG648464227
Comments: This Laboratory Grown Diamond was created by Chemical Vapor Deposition (CVD) growth process. Type IIa