



ELECTRONIC COPY

LG648452192
Report verification at igi.org



August 22, 2024

IGI Report Number **LG648452192**

Description **LABORATORY GROWN DIAMOND**

Shape and Cutting Style **CUSHION BRILLIANT**

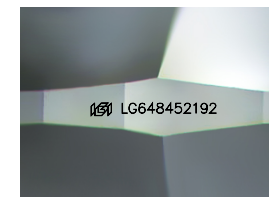
Measurements **12.12 X 8.85 X 5.88 MM**

GRADING RESULTS

Carat Weight **5.05 CARATS**

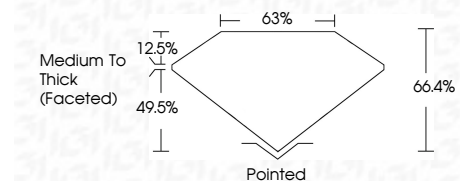
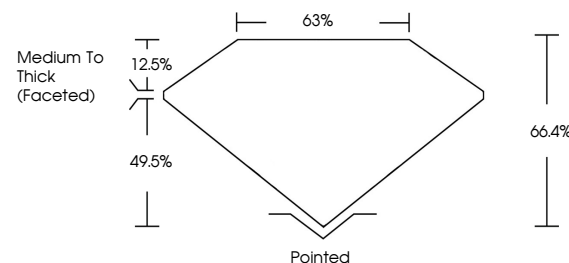
Color Grade **F**

Clarity Grade **VS 1**

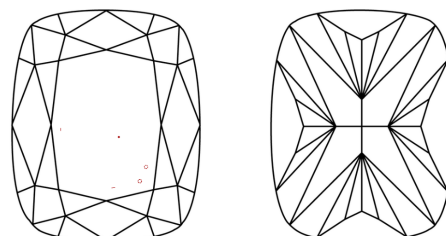


Sample Image Used

PROPORTIONS



CLARITY CHARACTERISTICS



KEY TO SYMBOLS

Red symbols indicate internal characteristics.
Green symbols indicate external characteristics.

COLOR

D E F G H I J Faint Very Light Light

CLARITY

IF	VS ¹⁻²	VS ¹⁻²	SI ¹⁻²	I ¹⁻³
Internally Flawless	Very Very Slightly Included	Very Slightly Included	Slightly Included	Included

ADDITIONAL GRADING INFORMATION

Polish **EXCELLENT**

Symmetry **EXCELLENT**

Fluorescence **NONE**

Inscription(s) **IGI LG648452192**

Comments: This Laboratory Grown Diamond was created by Chemical Vapor Deposition (CVD) growth process.
Type IIa



August 22, 2024
IGI Report No LG648452192
CUSHION BRILLIANT

5.05 CARATS
F

12.12 X 8.85 X 5.88 MM

Carat Weight
Color Grade
Clarity Grade
Table
Depth
Girdle
Culet
Polish
Symmetry
Fluorescence
Inscription(s)

5.05 CARATS
F
VS 1
66.4%
63%
Medium To Thick (Faceted)
Pointed
EXCELLENT
EXCELLENT
NONE
IGI LG648452192

Comments: This Laboratory Grown Diamond was created by Chemical Vapor Deposition (CVD) growth process.
Type IIa