



ELECTRONIC COPY

LABORATORY GROWN DIAMOND REPORT

August 20, 2024	
IGI Report Number	LG648451603
Description	LABORATORY GROWN DIAMOND
Shape and Cutting Style	CUSHION BRILLIANT
Measurements	8.92 X 6.53 X 4.46 MM

GRADING RESULTS

Carat Weight	2.10 CARATS
Color Grade	F
Clarity Grade	VS 2

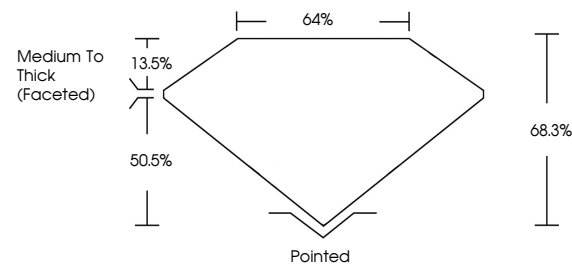
ADDITIONAL GRADING INFORMATION

Polish	EXCELLENT
Symmetry	EXCELLENT
Fluorescence	NONE
Inscription(s)	151 LG648451603

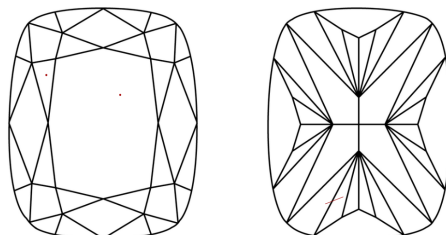
Comments: This Laboratory Grown Diamond was created by Chemical Vapor Deposition (CVD) growth process.
Type IIa

LG648451603
Report verification at igi.org

PROPORTIONS

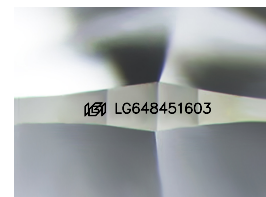


CLARITY CHARACTERISTICS



KEY TO SYMBOLS

Red symbols indicate internal characteristics.
Green symbols indicate external characteristics.



Sample Image Used

COLOR

D E F G H I J Faint Very Light Light

CLARITY

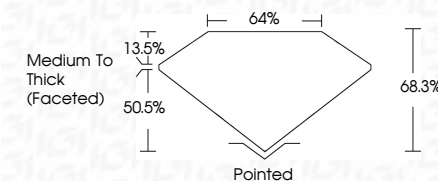
IF	VS ¹⁻²	VS ¹⁻²	SI ¹⁻²	I ¹⁻³
Internally Flawless	Very Very Slightly Included	Very Slightly Included	Slightly Included	Included



August 20, 2024	
IGI Report Number	LG648451603
Description	LABORATORY GROWN DIAMOND
Shape and Cutting Style	CUSHION BRILLIANT
Measurements	8.92 X 6.53 X 4.46 MM

GRADING RESULTS

Carat Weight	2.10 CARATS
Color Grade	F
Clarity Grade	VS 2



ADDITIONAL GRADING INFORMATION

Polish	EXCELLENT
Symmetry	EXCELLENT
Fluorescence	NONE
Inscription(s)	(15) LG648451603
Comments: This Laboratory Grown Diamond was created by Chemical Vapor Deposition (CVD) growth process.	
Type IIa	



IG

© IGI 2020, International Gemological Institute

FD - 10 20



THIS DOCUMENT WAS PRODUCED WITH THE FOLLOWING SECURITY MEASURES: SPECIAL DOCUMENT PAPER, INK SCREENS, WATERMARK, BACKGROUND DESIGNS, HOLOGRAM AND OTHER SECURITY FEATURES NOT LISTED AND DO EXCEED DOCUMENT SECURITY INDUSTRY GUIDELINES

August 20, 2024	GI Report No. LG46461693	2.10 CARATS	VS 2	68.3%	04%	<p>Medium to Thick (Faceted)</p> <p>Pointed</p> <p>EXCELLENT</p> <p>EXCELLENT</p> <p>NONE</p> <p>ISS: LG46461693</p>
CUSHION BRILLIANT						
52 x 5.63 x 4.46 MM						
Color Weight						
Color Grade	Clarity Grade	Depth	Table	Girdle	Symmetry	<p>Comments: This Gray-Grown Diamond was created by Chemical Vapor Deposition (CVD) growth process. Type IIa</p>

Comments:
This Laboratory Grown Diamond was
created by Chemical Vapor Deposition
(CVD) growth process.

www.igi.org