



**ELECTRONIC COPY**

LG648425641  
Report verification at igi.org



August 16, 2024

IGI Report Number **LG648425641**

Description **LABORATORY GROWN DIAMOND**

Shape and Cutting Style **CUSHION BRILLIANT**

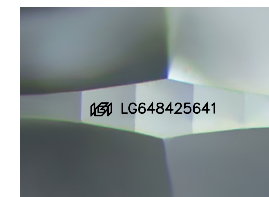
Measurements **8.95 X 6.57 X 4.35 MM**

**GRADING RESULTS**

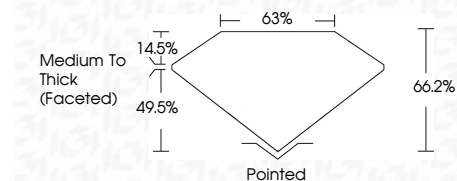
Carat Weight **2.05 CARATS**

Color Grade **G**

Clarity Grade **VS 1**



Sample Image Used



**ADDITIONAL GRADING INFORMATION**

Polish **EXCELLENT**

Symmetry **EXCELLENT**

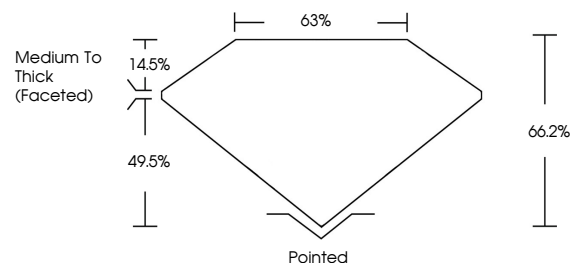
Fluorescence **NONE**

Inscription(s) **IGI LG648425641**

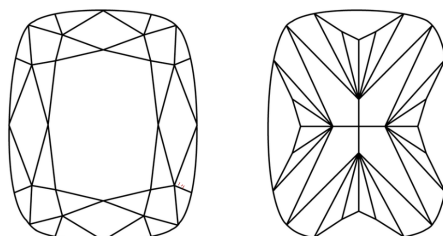
Comments: This Laboratory Grown Diamond was created by Chemical Vapor Deposition (CVD) growth process. Type IIa



**PROPORTIONS**



**CLARITY CHARACTERISTICS**



**KEY TO SYMBOLS**

Red symbols indicate internal characteristics.  
Green symbols indicate external characteristics.

**COLOR**

D E F G H I J Faint Very Light Light

**CLARITY**

IF VS<sup>1-2</sup> VS<sup>1-2</sup> SI<sup>1-2</sup> I<sup>1-3</sup>

Internally Flawless Very Very Slightly Included Very Slightly Included Slightly Included Included



August 16, 2024  
IGI Report No LG648425641  
**CUSHION BRILLIANT**  
8.95 X 6.57 X 4.35 MM  
2.05 CARATS  
Color Grade **G**  
Clarity Grade **VS 1**  
Table **14.5%**  
Depth **49.5%**  
Girdle **63%**  
Medium To Thick (Faceted)  
Culet **Pointed**  
Polish **EXCELLENT**  
Symmetry **EXCELLENT**  
Fluorescence **NONE**  
Inscription(s) **IGI LG648425641**

Comments: This Laboratory Grown Diamond was created by Chemical Vapor Deposition (CVD) growth process. Type IIa