

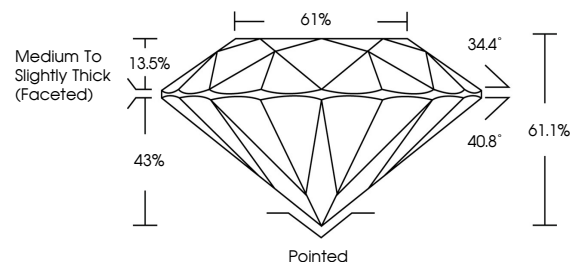


ELECTRONIC COPY

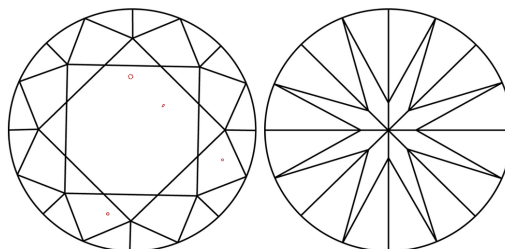
LABORATORY GROWN DIAMOND REPORT

LG648410988
Report verification at lgi.org

PROPORTIONS



CLARITY CHARACTERISTICS



KEY TO SYMBOLS

Red symbols indicate internal characteristics.
Green symbols indicate external characteristics.

COLOR

D E F G H I J Faint Very Light Light

CLARITY

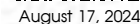
IF	VVS ¹⁻²	VS ¹⁻²	SI ¹⁻²	I ¹⁻³
Internally Flawless	Very Very Slightly Included	Very Slightly Included	Slightly Included	Included



© IGI 2020, International Gemological Institute

FD - 10 20

LABORATORY GROWN DIAMOND REPORT

IGI Report Number **LG648410988**Description **LABORATORY GROWN DIAMOND**Shape and Cutting Style **ROUND BRILLIANT**

Measurements 6.47 - 6.49 X 3.96 MM

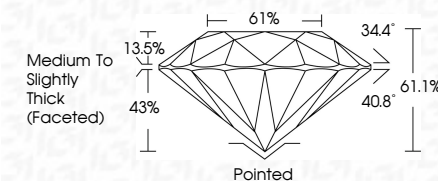
GRADING RESULTS

Carat Weight **1.04 CARAT**

Color Grade D

Clarity Grade VS 1

Cut Grade **EXCELLENT**



ADDITIONAL GRADING INFORMATION

Polish **EXCELLENT**Symmetry **EXCELLENT**Fluorescence **NONE**Inscription(s) LG648410988

Comments: This Laboratory Grown Diamond was created by Chemical Vapor Deposition (CVD) growth process.
Type IIa



August 17, 2024	Report No LG46410988
ROUND BRILLIANT	
1.04 CARAT	
D VS 1	
EXCELLENT	61.1%
61%	
Medium to Slightly Thick Faceted	
Pointed	
EXCELLENT	
EXCELLENT	
NONE	
lg46410988	
Comments: Very Fine Growth Diamond was treated by Chemical Vapor Deposition (CVD) growth process. Type IIa	