



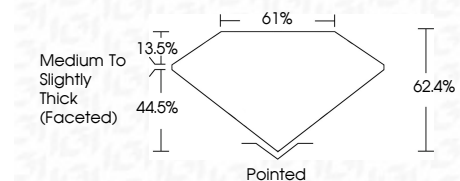
ELECTRONIC COPY

LG647494170
Report verification at igi.org



August 7, 2024
IGI Report Number LG647494170
Description LABORATORY GROWN DIAMOND
Shape and Cutting Style OVAL BRILLIANT
Measurements 10.15 X 7.02 X 4.38 MM

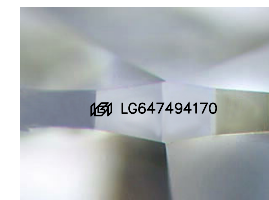
GRADING RESULTS
Carat Weight 1.97 CARAT
Color Grade E
Clarity Grade VS 1



ADDITIONAL GRADING INFORMATION
Polish EXCELLENT
Symmetry EXCELLENT
Fluorescence NONE
Inscription(s) LG647494170
Comments: This Laboratory Grown Diamond was created by Chemical Vapor Deposition (CVD) growth process. Type IIa

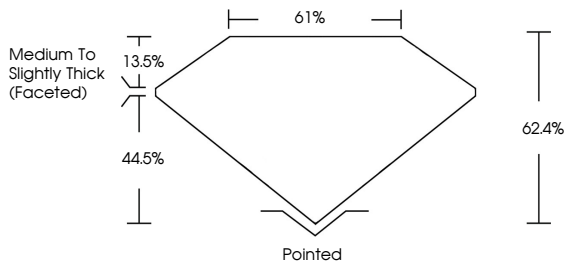


August 7, 2024
IGI Report No LG647494170
OVAL BRILLIANT
1.97 CARAT E
10.15 X 7.02 X 4.38 MM
Carat Weight 1.97 CARAT
Color Grade E
Clarity Grade VS 1
Depth 62.4%
Table 61%
Girdle Medium to Slightly Thick (Faceted)
Culet Pointed
Polish EXCELLENT
Symmetry EXCELLENT
Fluorescence NONE
Inscription(s) LG647494170
Comments: This Laboratory Grown Diamond was created by Chemical Vapor Deposition (CVD) growth process. Type IIa

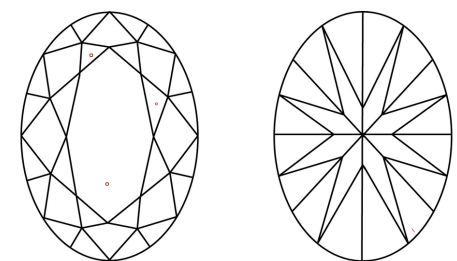


Sample Image Used

PROPORTIONS



CLARITY CHARACTERISTICS



KEY TO SYMBOLS
Red symbols indicate internal characteristics.
Green symbols indicate external characteristics.

COLOR

Table with color categories: D, E, F, G, H, I, J, Faint, Very Light, Light

CLARITY

Table with clarity categories: IF, VS 1-2, VS 1-2, SI 1-2, I 1-3, Internally Flawless, Very Very Slightly Included, Very Slightly Included, Slightly Included, Included



August 7, 2024
IGI Report Number LG647494170
Description LABORATORY GROWN DIAMOND
Shape and Cutting Style OVAL BRILLIANT
Measurements 10.15 X 7.02 X 4.38 MM

GRADING RESULTS
Carat Weight 1.97 CARAT
Color Grade E
Clarity Grade VS 1

ADDITIONAL GRADING INFORMATION
Polish EXCELLENT
Symmetry EXCELLENT
Fluorescence NONE
Inscription(s) LG647494170

Comments: This Laboratory Grown Diamond was created by Chemical Vapor Deposition (CVD) growth process. Type IIa