



ELECTRONIC COPY

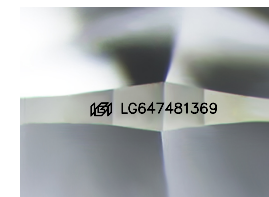
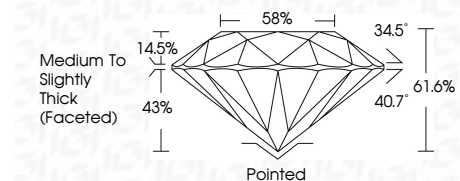
LG647481369
Report verification at igi.org



August 17, 2024
IGI Report Number LG647481369
Description LABORATORY GROWN DIAMOND
Shape and Cutting Style ROUND BRILLIANT
Measurements 7.97 - 8.03 X 4.94 MM

GRADING RESULTS

Carat Weight 1.97 CARAT
Color Grade E
Clarity Grade VS 1
Cut Grade IDEAL



Sample Image Used

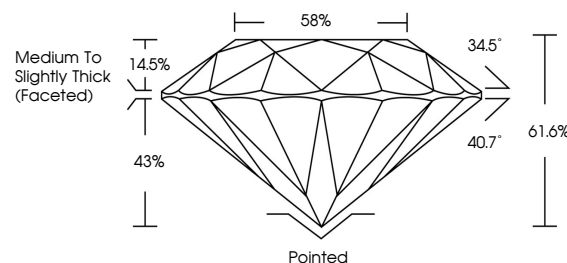
ADDITIONAL GRADING INFORMATION

Polish EXCELLENT
Symmetry EXCELLENT
Fluorescence NONE
Inscription(s) IGI LG647481369
Comments: This Laboratory Grown Diamond was created by Chemical Vapor Deposition (CVD) growth process. Type IIa

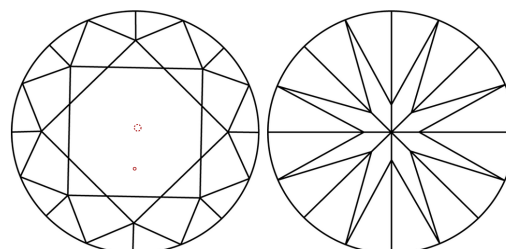


August 17, 2024
IGI Report No LG647481369
ROUND BRILLIANT
1.97 CARAT E
7.97 - 8.03 X 4.94 MM
Color Grade VS 1
Clarity Grade IDEAL
Depth 61.6%
Table 58%
Medium To Slightly Thick (Faceted)
Cutler Pointed
Polish EXCELLENT
Symmetry EXCELLENT
Fluorescence NONE
Inscription(s) IGI LG647481369
Comments: This Laboratory Grown Diamond was created by Chemical Vapor Deposition (CVD) growth process. Type IIa

PROPORTIONS



CLARITY CHARACTERISTICS



KEY TO SYMBOLS

Red symbols indicate internal characteristics.
Green symbols indicate external characteristics.

COLOR

D E F G H I J Faint Very Light Light

CLARITY

IF WS 1-2 VS 1-2 SI 1-2 I 1-3

Internally Flawless Very Very Slightly Included Very Slightly Included Slightly Included Included

