



**ELECTRONIC COPY**

## LABORATORY GROWN DIAMOND REPORT

August 12, 2024	
IGI Report Number	LG647467293
Description	LABORATORY GROWN DIAMOND
Shape and Cutting Style	SQUARE CUSHION BRILLIANT
Measurements	6.80 X 6.64 X 4.42 MM

## GRADING RESULTS

Carat Weight	1.57 CARAT
Color Grade	E
Clarity Grade	VVS 2

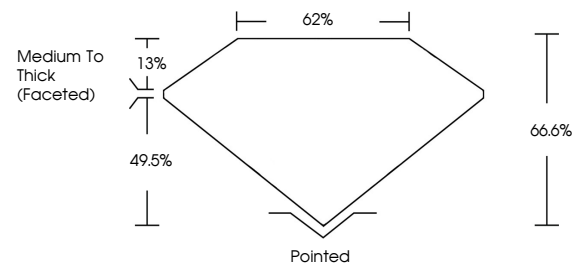
### ADDITIONAL GRADING INFORMATION

Polish	EXCELLENT
Symmetry	EXCELLENT
Fluorescence	NONE
Inscription(s)	 LG647467293

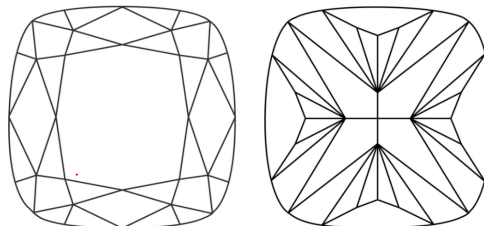
Comments: This Laboratory Grown Diamond was created by Chemical Vapor Deposition (CVD) growth process.  
Type IIa

LG647467293  
Report verification at [igi.org](https://igi.org)

## PROPORTIONS

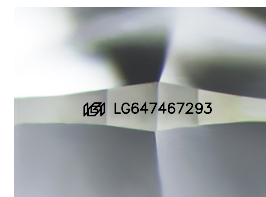


## CLARITY CHARACTERISTICS



## KEY TO SYMBOLS

Red symbols indicate internal characteristics.  
Green symbols indicate external characteristics.



Sample Image Used

## COLOR

D E F G H I J Faint Very Light Light

## CLARITY

IF	VVS <sup>1,2</sup>	VS <sup>1,2</sup>	SI <sup>1,2</sup>	I <sup>1,3</sup>
Internally Flawless	Very Very Slightly Included	Very Slightly Included	Slightly Included	Included



© IGI 2020, International Gemological Institute

FD - 10 20

**www.igi.org**

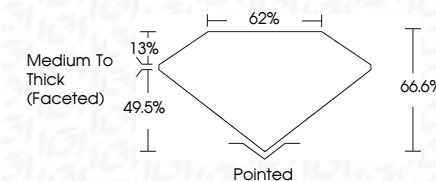
## LABORATORY GROWN DIAMOND REPORT



August 12, 2024	
IGI Report Number	LG647467293
Description	LABORATORY GROWN DIAMOND
Shape and Cutting Style	SQUARE CUSHION BRILLIANT
Measurements	6.80 X 6.64 X 4.42 MM

## GRADING RESULTS

Carat Weight	1.57 CARAT
Color Grade	E
Clarity Grade	VVS 2



### ADDITIONAL GRADING INFORMATION

Polish	EXCELLENT
Symmetry	EXCELLENT
Fluorescence	NONE
Inscription(s)	(16) LG647467293

Comments: This Laboratory Grown Diamond was created by Chemical Vapor Deposition (CVD) growth process.  
Type IIa



August 12, 2024	
SI Report No. LG47467293	
SQUARE CUSHION BRILLIANT	
1.60 X 6.64 X 4.42 MM	
Color Weight	1.57 CARAT
Color Grade	VVS 2
Clarity Grade	66.6%
Depth	62%
Table	Medium to Thick (Faceted)
Girdle	
Culet	Pointed
Polish	EXCELLENT
Symmetry	EXCELLENT
Fluorescence	NONE
Inscriptions(s)	681 LG47467293
Comments:	
	Very Fine, Very Clean Diamond was created by Chemical Vapor Deposition (CVD) growth process.
	Type IIA