

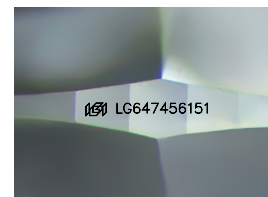
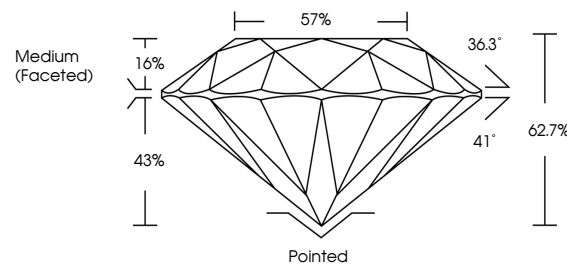


ELECTRONIC COPY

LABORATORY GROWN DIAMOND REPORT

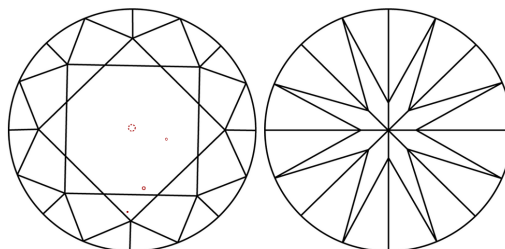
LG647456151
Report verification at igi.org

PROPORTIONS



Sample Image Used

CLARITY CHARACTERISTICS



KEY TO SYMBOLS

Red symbols indicate internal characteristics.
Green symbols indicate external characteristics.

COLOR

D E F G H I J Faint Very Light Light

CLARITY

IF	VVS ^{1,2}	VS ^{1,2}	SI ^{1,2}	I ^{1,3}
Internally Flawless	Very Very Slightly Included	Very Slightly Included	Slightly Included	Included



© IGI 2020, International Gemological Institute

FD - 10 20

www.igi.org

LABORATORY GROWN DIAMOND REPORT



August 10, 2024

IGI Report Number **LG647456151**Description **LABORATORY GROWN DIAMOND**Shape and Cutting Style **ROUND BRILLIANT**

Measurements 6.53 - 6.55 X 4.11 MM

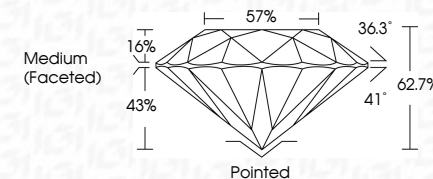
GRADING RESULTS

Carat Weight 1.09 CARAT

Color Grade D

Clarity Grade VS 1

Cut Grade **EXCELLENT**



ADDITIONAL GRADING INFORMATION

Polish EXCELLENT

Symmetry **EXCELLENT**Fluorescence NONEInscription(s)  LG647456151

Comments: This Laboratory Grown Diamond was created by Chemical Vapor Deposition (CVD) growth process.
Type IIa



August 10, 2024	
GI Report No. LG474651	
ROUND BRILLANT	
6.63 - 6.65 X 4.11 MM	1.09 CARAT
Color Weight	D
Color Grade	VS 1
Clarity Grade	EXCELLENT
Cut Grade	62.7%
Depth	57%
Table	Medium (Faceted)
Girdle	
Culet	Polished
Polish	EXCELLENT
Symmetry	EXCELLENT
Fluorescence	NONE
Inscriptions(s)	lgf LG474651
Comments:	
The Laboratory Grown Diamond was subjected to Natural Vapor Deposition (CVD) growth process. Type IIa	