

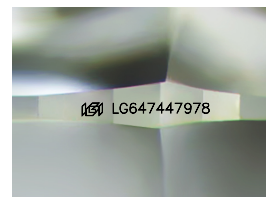
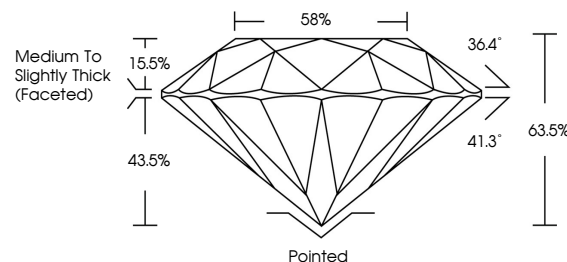


ELECTRONIC COPY

LABORATORY GROWN DIAMOND REPORT

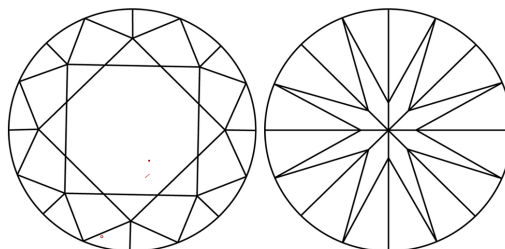
LG647447978
Report verification at [lqi.org](https://doi.org/10.21203/rs.3.rs-1211111/v1)

PROPORTIONS



Sample Image Used

CLARITY CHARACTERISTICS



KEY TO SYMBOLS

Red symbols indicate internal characteristics.
Green symbols indicate external characteristics.

COLOR

D E F G H I J Faint Very Light Light

CLARITY

IF	VVS ¹⁻²	VS ¹⁻²	SI ¹⁻²	I ¹⁻³
Internally Flawless	Very Very Slightly Included	Very Slightly Included	Slightly Included	Included



© IGI 2020, International Gemological Institute

FD - 10 20

www.igi.org

LABORATORY GROWN DIAMOND REPORT



August 9, 2024

IGI Report Number **LG647447978**Description **LABORATORY GROWN DIAMOND**Shape and Cutting Style **ROUND BRILLIANT**

Measurements 7.14 - 7.21 X 4.56 MM

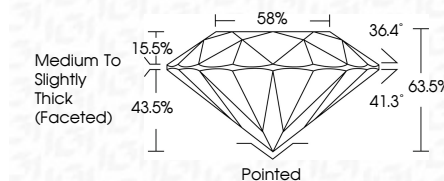
GRADING RESULTS

Carat Weight 1.46 CARAT

Color Grade **E**

Clarity Grade VS 1

Cut Grade **EXCELLENT**



ADDITIONAL GRADING INFORMATION

Polish **EXCELLENT**Symmetry **EXCELLENT**Fluorescence **NONE**Inscription(s) LG647447978

Comments: This Laboratory Grown Diamond was created by Chemical Vapor Deposition (CVD) growth process.
Type IIa



August 9, 2024	1.46 CARAT
G Report No.GS474978	V S 1
ROUND BRILLIANT	EXCELLENT
14- 14 - 7.21 X 4.51 MM	68.5%
Coral Weight	88%
Color Grade	Medium to Slightly Thick Faceted
Cut Grade	Poished
Depth	EXCELLENT
Table	EXCELLENT
Girdle	NONE
	(#) GS474978
	Comments:
	The Laboratory Grown Diamond was created by Chemical Vapor Deposition (CVD) growth process.
	Type IIA