



ELECTRONIC COPY

LABORATORY GROWN DIAMOND REPORT

August 12, 2024	
IGI Report Number	LG647440697
Description	LABORATORY GROWN DIAMOND
Shape and Cutting Style	EMERALD CUT
Measurements	8.39 X 6.18 X 4.17 MM

GRADING RESULTS

Carat Weight	2.12 CARATS
Color Grade	E
Clarity Grade	VS 1

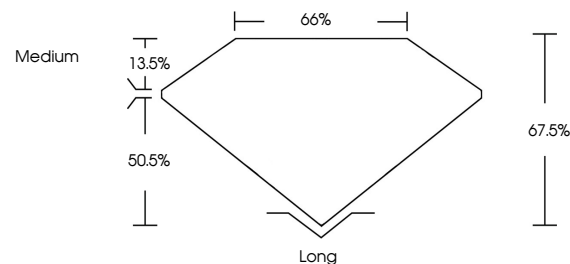
ADDITIONAL GRADING INFORMATION

Polish	EXCELLENT
Symmetry	EXCELLENT
Fluorescence	NONE
Inscription(s)	161 LG647440697

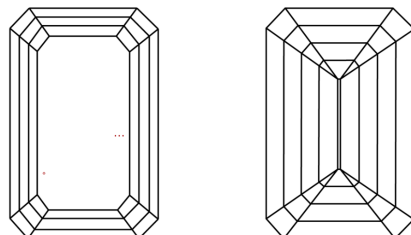
Comments: This Laboratory Grown Diamond was created by Chemical Vapor Deposition (CVD) growth process.
Type IIa

LG647440697
Report verification at igi.org

PROPORTIONS

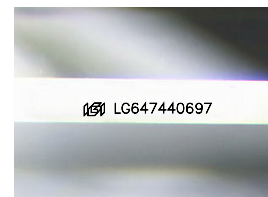


CLARITY CHARACTERISTICS



KEY TO SYMBOLS

Red symbols indicate internal characteristics.
Green symbols indicate external characteristics.



Sample Image Used

COLOR

D E F G H I J Faint Very Light Light

CLARITY

IF	VVS ¹⁻²	VS ¹⁻²	SI ¹⁻²	I ¹⁻³
Internally Flawless	Very Very Slightly Included	Very Slightly Included	Slightly Included	Included



© IGI 2020, International Gemological Institute

FD - 10 20

www.igi.org

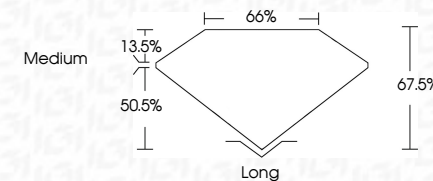
LABORATORY GROWN DIAMOND REPORT



August 12, 2024	
IGI Report Number	LG647440697
Description	LABORATORY GROWN DIAMOND
Shape and Cutting Style	EMERALD CUT
Measurements	8.39 X 6.18 X 4.17 MM

GRADING RESULTS

Carat Weight	2.12 CARATS
Color Grade	E
Clarity Grade	VS 1



ADDITIONAL GRADING INFORMATION

Polish	EXCELLENT
Symmetry	EXCELLENT
Fluorescence	NONE
Inscription(s)	 LG647440697

Comments: This Laboratory Grown Diamond was created by Chemical Vapor Deposition (CVD) growth process.
Type IIa



August 12, 2024
GI Report No LG647440697

3.39 X 6.18 X 4.17MM	2.12 CARATS	VS 1	Long
Carat Weight		67.5%	EXCELLENT
Color Grade		66%	EXCELLENT
Clarity Grade		Medium	NONE
Depth			
Table			
Grade			
Culet			
Polish			
Symmetry			
Fluorescence			

Comments:
This Laboratory Grown Diamond was created by Chemical Vapor Deposition (CVD) growth process.

THIS DOCUMENT WAS PRODUCED WITH THE FOLLOWING SECURITY MEASURES: SPECIAL DOCUMENT PAPER, INK SCREENS, WATERMARK, BACKGROUND DESIGNS, HOLOGRAM AND OTHER SECURITY FEATURES NOT LISTED AND DO EXCEED DOCUMENT SECURITY INDUSTRY GUIDELINES