

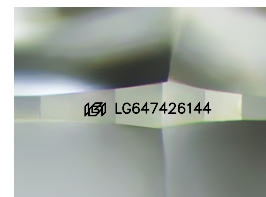
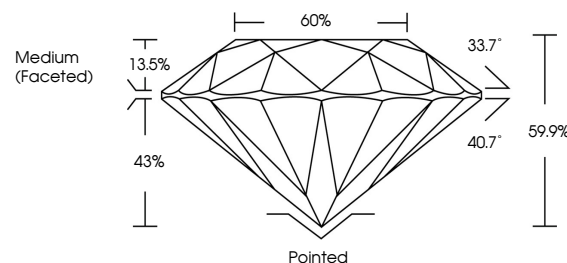


ELECTRONIC COPY

LABORATORY GROWN DIAMOND REPORT

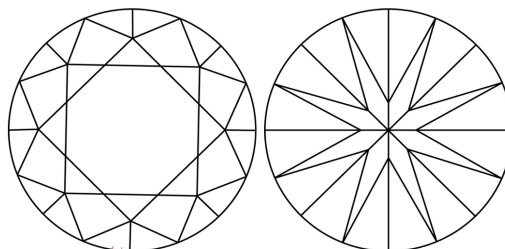
LG647426144
Report verification at igi.org

PROPORTIONS



Sample Image Used

CLARITY CHARACTERISTICS



KEY TO SYMBOLS

Red symbols indicate internal characteristics.
Green symbols indicate external characteristics.

COLOR

D E F G H I J Faint Very Light Light

CLARITY

IF	VS ^{1,2}	VS ^{1,2}	SI ^{1,2}	I ^{1,3}
Internally Flawless	Very Very Slightly Included	Very Slightly Included	Slightly Included	Included



© IGI 2020, International Gemological Institute

FD - 10 20

www.igi.org

LABORATORY GROWN DIAMOND REPORT



August 12, 2024

IGI Report Number **LG647426144**Description **LABORATORY GROWN DIAMOND**Shape and Cutting Style **ROUND BRILLIANT**

Measurements 7.38 - 7.39 X 4.43 MM

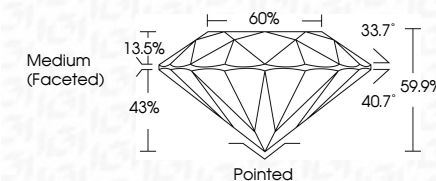
GRADING RESULTS

Carat Weight 1.48 CARAT

Color Grade

Clarity Grade WS 2

Cut Grade **EXCELLENT**



ADDITIONAL GRADING INFORMATION

Polish **EXCELLENT**Symmetry **EXCELLENT**Fluorescence **NONE**Inscription(s) **13** LG647426144

Comments: This Laboratory Grown Diamond was created by Chemical Vapor Deposition (CVD) growth process.
Type IIa



August 12, 2024	Report No. LG547426144	
ROUND BRILLIANT		
38 - 39 X 4.43 MM		
Carat Weight	1.48 CARAT	
Color Grade	E	
Clarity Grade	VVS 2	
Depth	EXCELLENT	
Table	69.5%	
Girdle	65%	
	Medium (Faced-to)	
Culet	Pointed	
Polish	EXCELLENT	
Symmetry	EXCELLENT	
Fluorescence	NONE	
Inscriptions(s)	lg51 LG547426144	
Comments:		
The Laboratory Grown Diamond was found to be a Natural Diamond via Vapor Deposition (VD) growth process. Type IIG		