

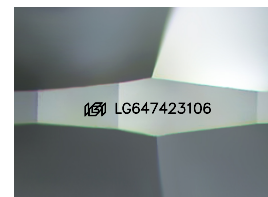
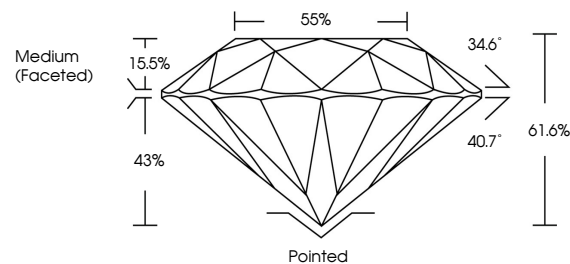


ELECTRONIC COPY

LABORATORY GROWN DIAMOND REPORT

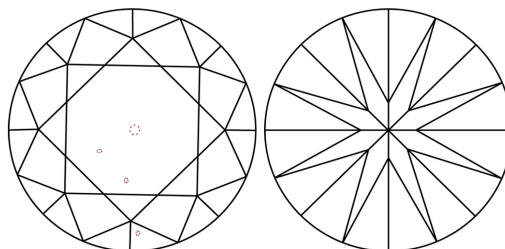
LG647423106
Report verification at igi.org

PROPORTIONS



Sample Image Used

CLARITY CHARACTERISTICS



KEY TO SYMBOLS

Red symbols indicate internal characteristics.
Green symbols indicate external characteristics.

COLOR

D E F G H I J Faint Very Light Light

CLARITY

IF	VVS ¹⁻²	VS ¹⁻²	SI ¹⁻²	I ¹⁻³
Internally Flawless	Very Very Slightly Included	Very Slightly Included	Slightly Included	Included



© IGI 2020, International Gemological Institute

FD - 10 20

www.igi.org

LABORATORY GROWN DIAMOND REPORT



August 8, 2024

IGI Report Number **LG647423106**Description **LABORATORY GROWN DIAMOND**Shape and Cutting Style **ROUND BRILLIANT**

Measurements	8.63 - 8.68 X 5.35 MM
--------------	-----------------------

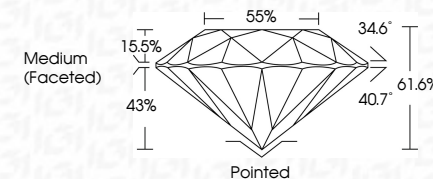
GRADING RESULTS

Carat Weight **2.46 CARATS**

Color Grade E

Clarity Grade VS 1

Cut Grade **IDEAL**



ADDITIONAL GRADING INFORMATION

Polish **EXCELLENT**Symmetry **EXCELLENT**Fluorescence **NONE**Inscription(s) LG647423106

Comments: This Laboratory Grown Diamond was created by Chemical Vapor Deposition (CVD) growth process.
Type IIa



August 8, 2024	GI Report No.IG647423106	2.46 CARATS	VS 1	Pointed	Comments: Grown Diamond was created by Chemical Vapor Deposition (CVD) growth process. Type IIa
ROUND BRILLIANT			IDEAL	EXCELLENT	
			61.6%	EXCELLENT	
			55%	NONE	
			Medium (Faceted)	IG647423106	
	6.53 x 4.68 x 5.35 MM				
	Carat Weight				
	Color Grade	Clarity Grade	Cut Grade	Polish	Symmetry
				Fluorescence	Inscription(s)
		Table	Depth		
		Girdle			