

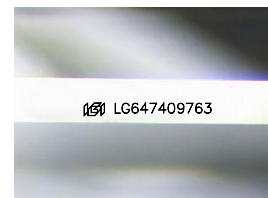
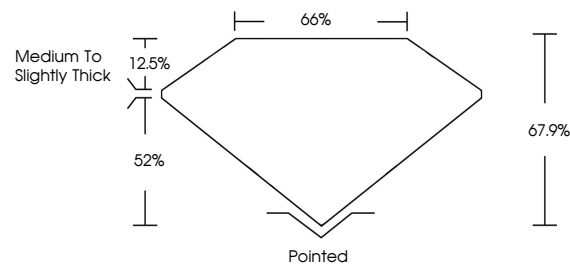


ELECTRONIC COPY

LABORATORY GROWN DIAMOND REPORT

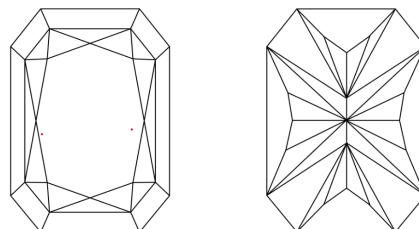
LG647409763
Report verification at igi.org

PROPORTIONS



Sample Image Used

CLARITY CHARACTERISTICS



KEY TO SYMBOLS

Red symbols indicate internal characteristics.
Green symbols indicate external characteristics.

COLOR

D E F G H I J Faint Very Light Light

CLARITY

IF	VVS ¹⁻²	VS ¹⁻²	SI ¹⁻²	I ¹⁻³
Internally Flawless	Very Very Slightly Included	Very Slightly Included	Slightly Included	Included



© IGI 2020, International Gemological Institute

FD - 10 20

LABORATORY GROWN DIAMOND REPORT



August 8, 2024

IGI Report Number **LG647409763**Description **LABORATORY GROWN DIAMOND**

Shape and Cutting Style

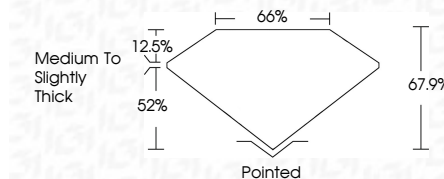
CUT CORNERED
RECTANGULAR MODIFIED
BRILLIANT

Measurements **9.04 X 6.23 X 4.23 MM**

GRADING RESULTS

Carat Weight **2.04 CARATS**

Color Grade E

Clarity Grade WS 2

ADDITIONAL GRADING INFORMATION

Polish **EXCELLENT**Symmetry **EXCELLENT**Fluorescence NONEInscription(s) **13** LG647409763

Comments: This Laboratory Grown Diamond was created by Chemical Vapor Deposition (CVD) growth process.
Type IIa



August 8, 2024	GI Report No LG47497/63	
GI CUT CORNERED RECT. MODIFIED BRILLIANT		
2.04 CARATS		
Color Weight		
0.04 X 0.28 X 4.23 MM		
Color Grade	VS 2	
Clarity Grade	61.7%	
Depth	66%	
Table	Medium to Slightly	Thick
Grain		
Clue:	Pointed	
Polish	EXCELLENT	
Symmetry	EXCELLENT	
Fluorescence	NONE	
Inscriptions(s)	1891 LG47497/63	
Comments:		
The Laboratory Grown Diamond was deposited by Vapor Deposition GVD growth process.		
Type IIG		