

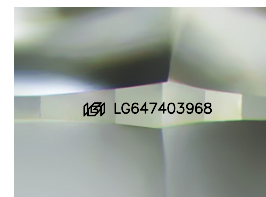
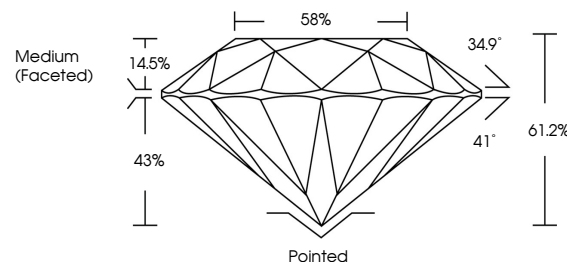


**ELECTRONIC COPY**

## LABORATORY GROWN DIAMOND REPORT

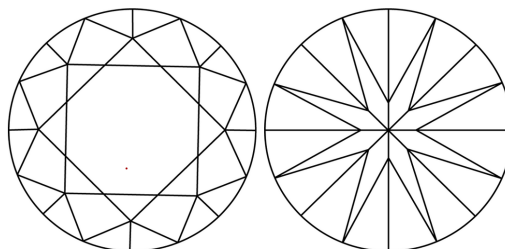
LG647403968  
Report verification at [lgi.org](https://lgi.org)

## PROPORTIONS



Sample Image Used

## CLARITY CHARACTERISTICS



### KEY TO SYMBOLS

Red symbols indicate internal characteristics.  
Green symbols indicate external characteristics.

**COLOR**

D E F G H I J Faint Very Light Light

## CLARITY

IF	VVS <sup>1,2</sup>	VS <sup>1,2</sup>	SI <sup>1,2</sup>	I <sup>1,3</sup>
Internally Flawless	Very Very Slightly Included	Very Slightly Included	Slightly Included	Included



© IGI 2020, International Gemological Institute

FD - 10 20

**www.igi.org**

## LABORATORY GROWN DIAMOND REPORT



August 9, 2024

IGI Report Number **LG647403968**Description **LABORATORY GROWN DIAMOND**Shape and Cutting Style **ROUND BRILLIANT**

Measurements 6.62 - 6.64 X 4.06 MM

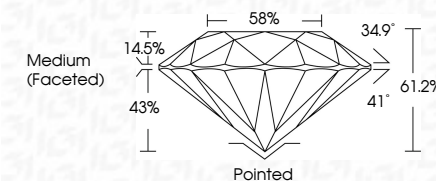
## GRADING RESULTS

Carat Weight 1.09 CARAT

Color Grade E

Clarity Grade WS 2

Cut Grade **IDEAL**



### ADDITIONAL GRADING INFORMATION

Polish EXCELLENT

Symmetry **EXCELLENT**Fluorescence **NONE**Inscription(s)  LG647403968

Comments: This Laboratory Grown Diamond was created by Chemical Vapor Deposition (CVD) growth process.  
Type IIa



August 9, 2024	1.05 CARAT
GI Report No. LG47402968	E
ROUND BRILLIANT	VVS 2
	IDEAL
	61.2%
	58%
	Medium (Faceted)
	Pointed
	EXCELLENT
	EXCELLENT
	NONE
	lg9 LG47402968

Comments:

The Laboratory Crown Diamond was  
 created by a High Pressure High Temperature  
 (HPHT) growth process.

Type IIA