

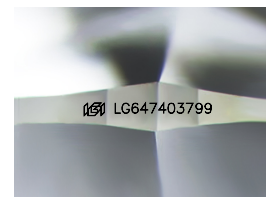
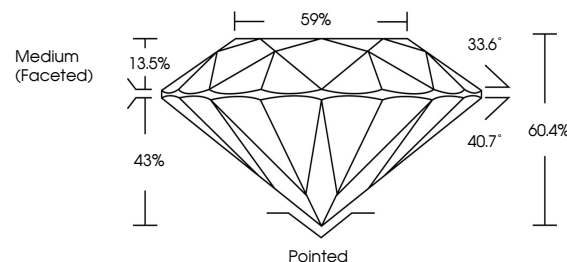


**ELECTRONIC COPY**

## LABORATORY GROWN DIAMOND REPORT

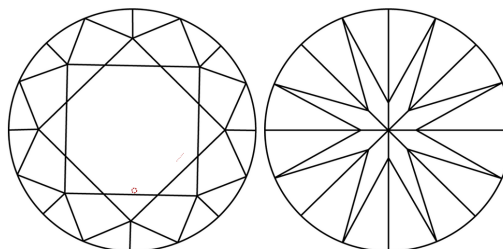
LG647403799  
Report verification at [lgi.org](https://lgi.org)

## PROPORTIONS



Sample Image Used

## CLARITY CHARACTERISTICS



## KEY TO SYMBOLS

Red symbols indicate internal characteristics.  
Green symbols indicate external characteristics.

## COLOR

D E F G H I J Faint Very Light Light

## CLARITY

IF	VS <sup>1,2</sup>	VS <sup>1,2</sup>	SI <sup>1,2</sup>	I <sup>1,3</sup>
Internally Flawless	Very Very Slightly Included	Very Slightly Included	Slightly Included	Included



© IGI 2020, International Gemological Institute

FD - 10 20

**www.igi.org**

## LABORATORY GROWN DIAMOND REPORT



August 8, 2024

IGI Report Number **LG647403799**Description **LABORATORY GROWN DIAMOND**Shape and Cutting Style **ROUND BRILLIANT**

Measurements 6.62 - 6.64 X 4.00 MM

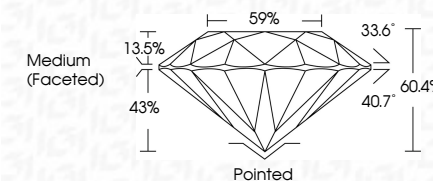
## GRADING RESULTS

Carat Weight 1.08 CARAT

Color Grade D

Clarity Grade VS 1

Cut Grade **IDEAL**



### ADDITIONAL GRADING INFORMATION

Polish **EXCELLENT**Symmetry **EXCELLENT**Fluorescence **NONE**Inscription(s)  LG647403799

Comments: This Laboratory Grown Diamond was created by Chemical Vapor Deposition (CVD) growth process.  
Type IIa



August 8, 2024		Report No. LG47403799	
ROUND BRILLIANT		1.08 CARAT	
4.62 - 4.64 X 4.00 MM		D	
Color Weight		VS 1	
Color Grade		IDEAL	
Clarity Grade		60.4%	
Cut Grade		59%	
Depth		Medium (Faceted)	
Table		Pointed	
Girdle		EXCELLENT	
		EXCELLENT	
		NONE	
		I6915647403799	
Comments:			
		The Laboratory Crown Diamond was	
		Natural Vapor Deposition	
		CVD growth process.	
		Type Iia	