

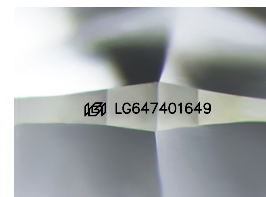
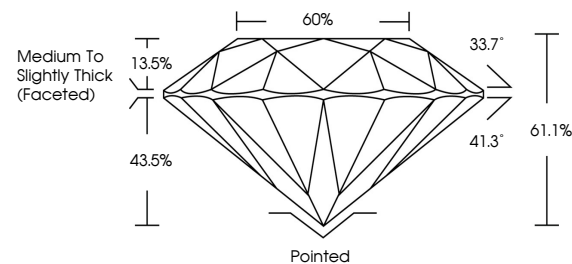


ELECTRONIC COPY

LABORATORY GROWN DIAMOND REPORT

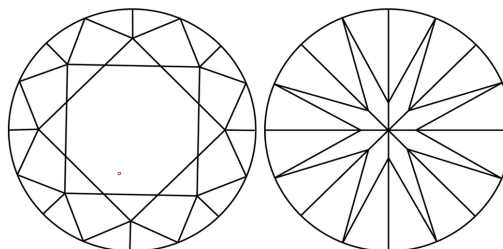
LG647401649
Report verification at igi.org

PROPORTIONS



Sample Image Used

CLARITY CHARACTERISTICS



KEY TO SYMBOLS

Red symbols indicate internal characteristics.
Green symbols indicate external characteristics.

COLOR

D E F G H I J Faint Very Light Light

CLARITY

IF	VVS ¹⁻²	VS ¹⁻²	SI ¹⁻²	I ¹⁻³
Internally Flawless	Very Very Slightly Included	Very Slightly Included	Slightly Included	Included



© IGI 2020, International Gemological Institute

FD - 10 20

www.igi.org

LABORATORY GROWN DIAMOND REPORT



August 9, 2024

IGI Report Number **LG647401649**Description **LABORATORY GROWN DIAMOND**Shape and Cutting Style **ROUND BRILLIANT**

Measurements	6.52 - 6.55 X 3.99 MM
--------------	-----------------------

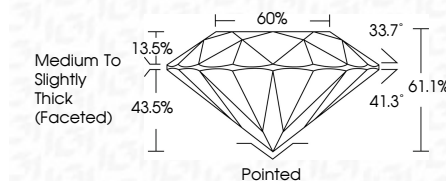
GRADING RESULTS

Carat Weight **1.04 CARAT**

Color Grade	D
-------------	---

Clarity Grade VS 1

Cut Grade **IDEAL**



ADDITIONAL GRADING INFORMATION

Polish **EXCELLENT**Symmetry **EXCELLENT**Fluorescence **NONE**Inscription(s) LG647401649

Comments: This Laboratory Grown Diamond was created by Chemical Vapor Deposition (CVD) growth process.
Type IIa



August 9, 2024
IGI Report No LG647401649
ROUND BRILLIANT

6.52 - 6.65 X 3.99 MM	1.04 CARAT
Carat Weight	D
Color Grade	VS 1
Clarity Grade	IDEAL
Cut Grade	61.1%
Depth	60%
Table	Medium to Slightly Thick (Faceted)
Girdle	
Culet	Pointed
Polish	EXCELLENT
Symmetry	EXCELLENT
Fluorescence	NONE

Comments:
This Laboratory Grown Diamond was created by Chemical Vapor Deposition (CVD) growth process.